

“proprietary and confidential”

Basic Model Performance Sample

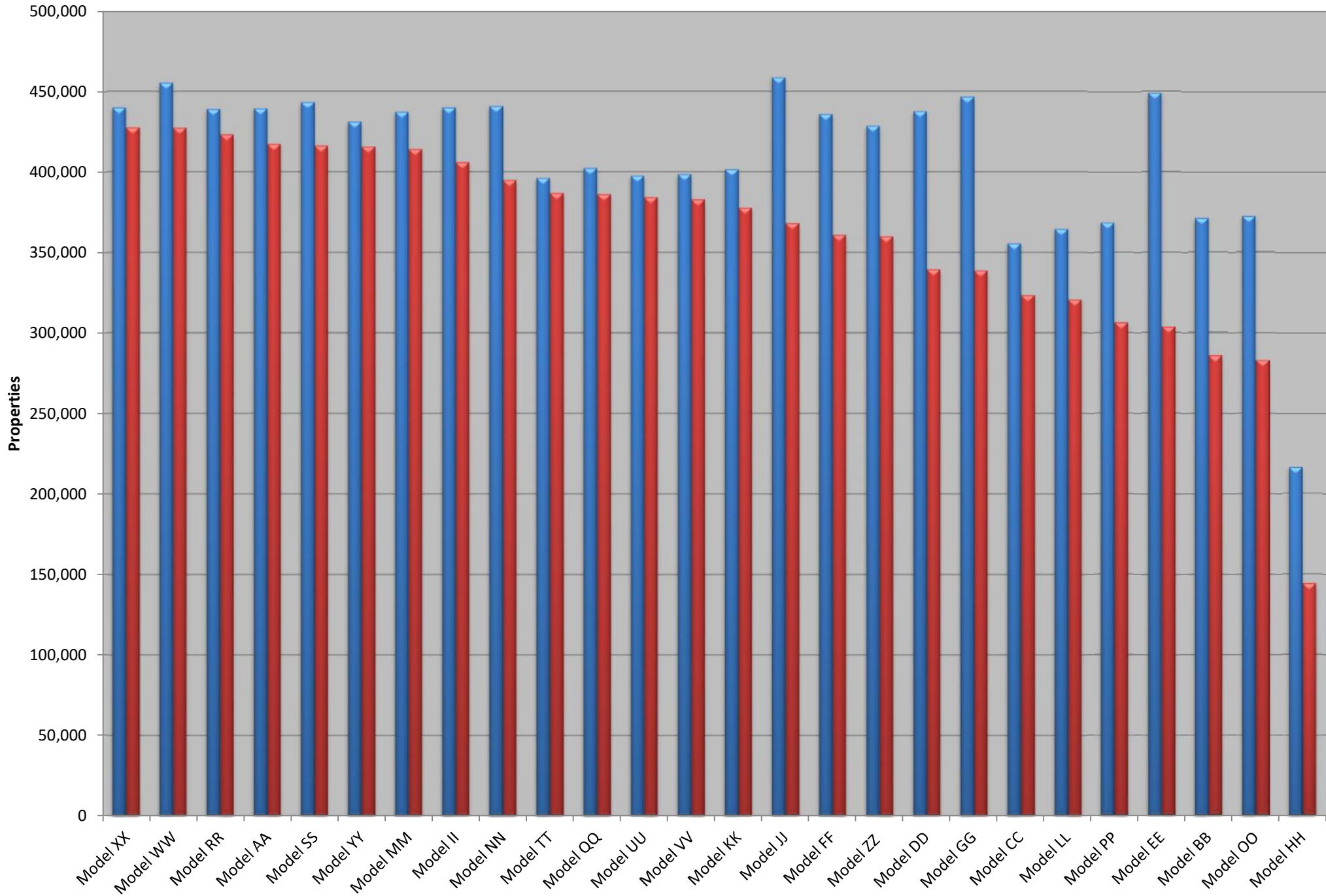
The following pages show the charts and some of the tables that accompany them. Some tables are too large to print, so only selections are shown here.

Furthermore, each chart is based on a pivot table. Users can change the parameters of the pivot tables and use the pivot data directly.

Model Test Vendor Summary

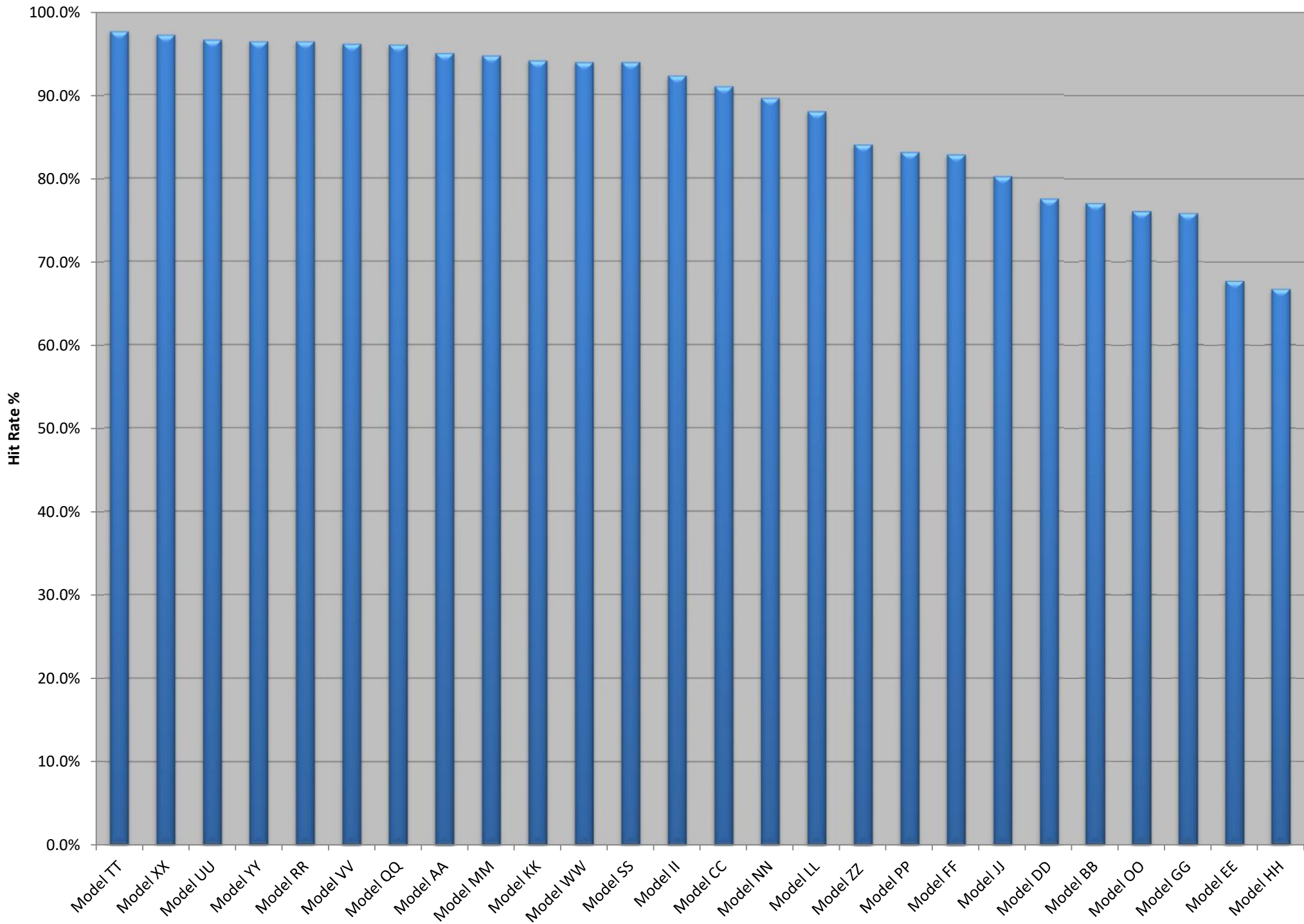
Record Counts - All Models

Records Hits



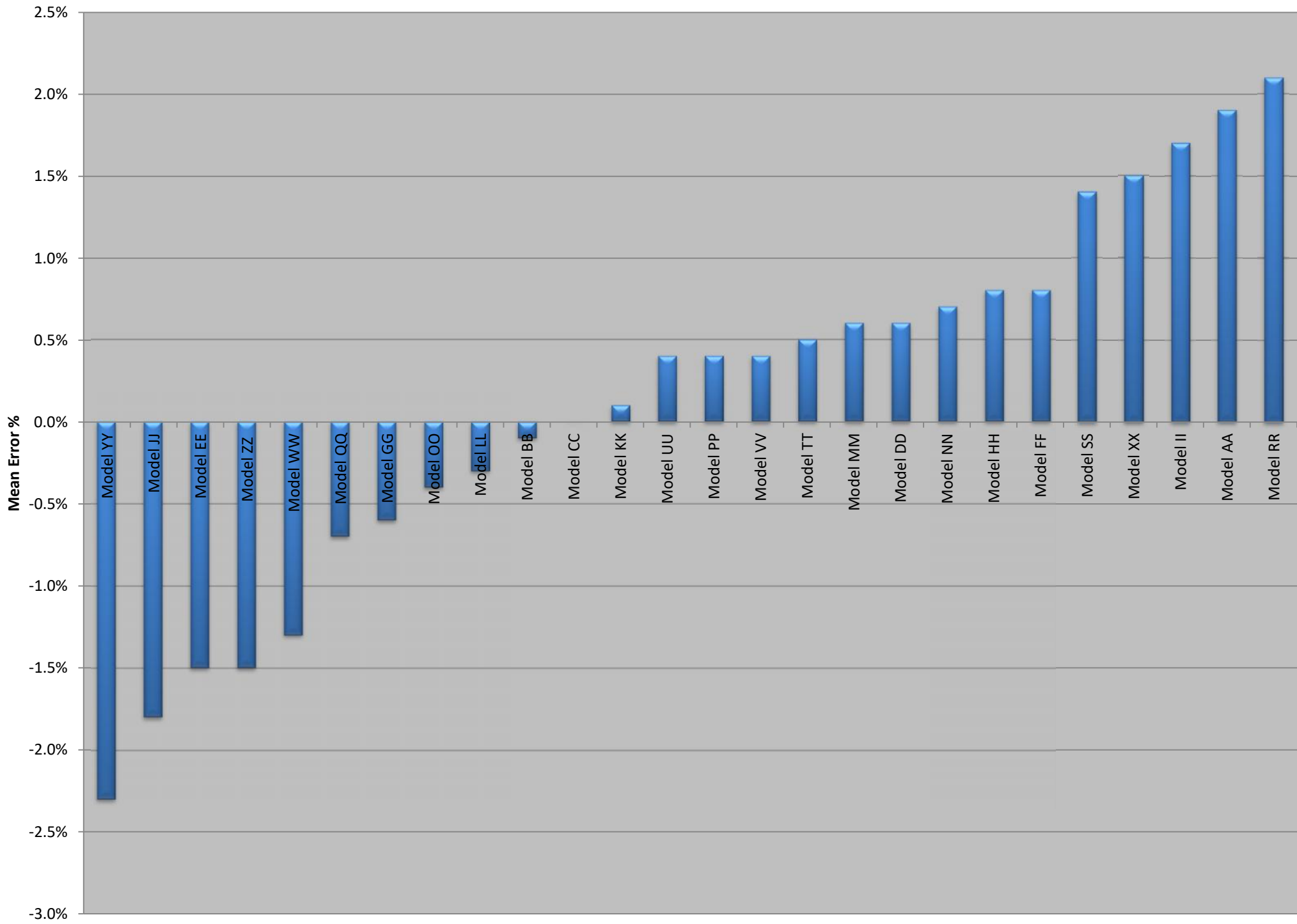
Model Test Vendor Summary

Hit Rate - All Models



Model Test Vendor Summary

Mean Error - All Models

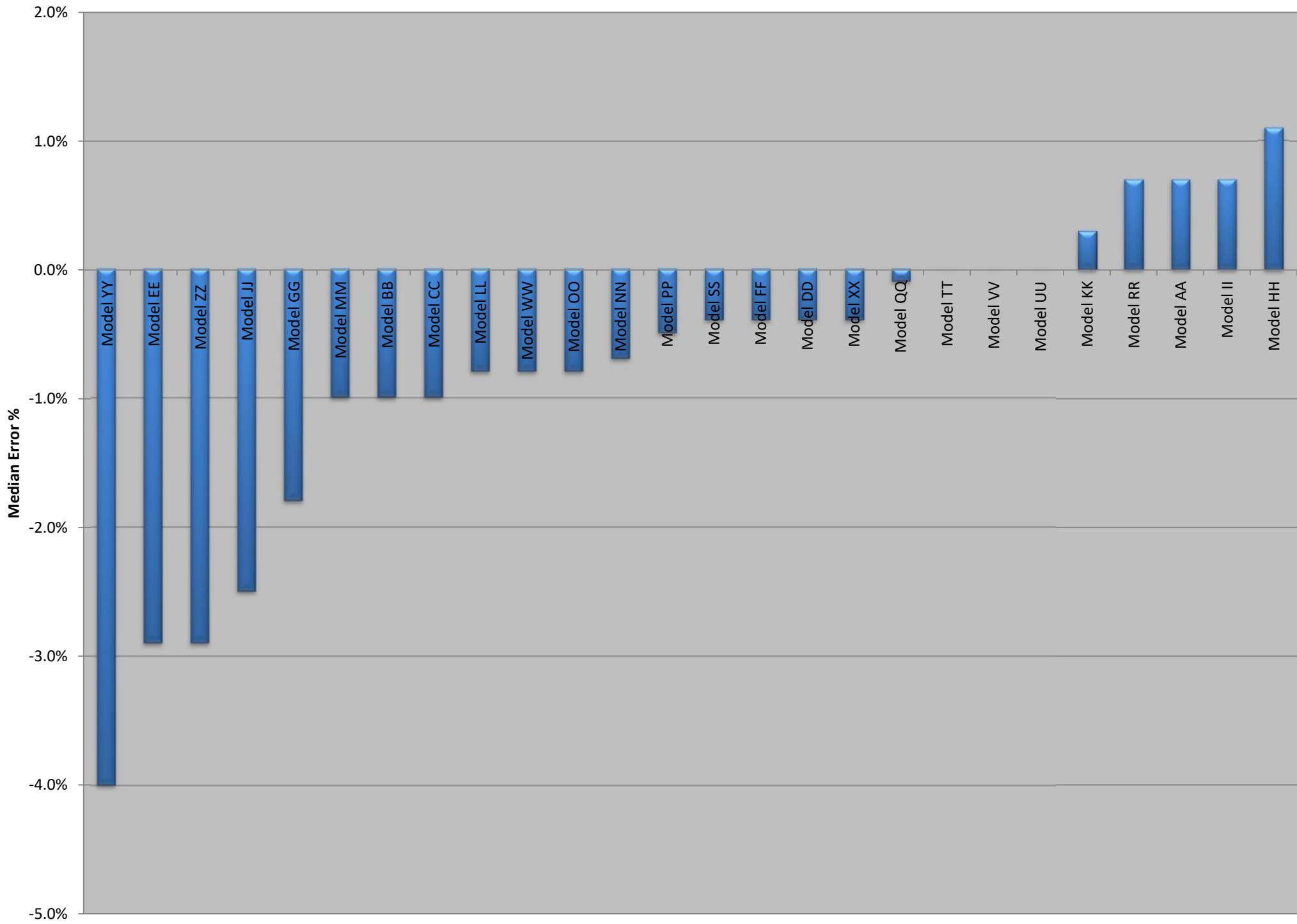


“proprietary and confidential”

	Data					
Model	Mean Error	MDE	MAE	MDAE	SD	PPE10%
Model AA	1.9%	0.7%	5.9%	2.0%	13.1%	85.5%
Model BB	-0.1%	-1.0%	9.3%	4.5%	17.7%	72.9%
Model CC	0.0%	-1.0%	6.9%	3.6%	13.4%	82.8%
Model DD	0.6%	-0.4%	6.3%	3.5%	11.3%	83.2%
Model EE	-1.5%	-2.9%	10.9%	8.2%	15.3%	58.7%
Model FF	0.8%	-0.4%	6.8%	3.7%	12.6%	81.2%
Model GG	-0.6%	-1.8%	8.1%	5.4%	12.6%	76.2%
Model HH	0.8%	1.1%	6.3%	3.0%	12.6%	84.4%
Model II	1.7%	0.7%	5.3%	2.0%	11.6%	87.0%
Model JJ	-1.8%	-2.5%	5.3%	3.2%	9.6%	88.8%
Model KK	0.1%	0.3%	3.4%	1.4%	7.7%	93.4%
Model LL	-0.3%	-0.8%	5.9%	2.8%	11.4%	85.3%
Model MM	0.6%	-1.0%	7.1%	3.7%	13.2%	81.9%
Model NN	0.7%	-0.7%	6.5%	3.4%	11.9%	83.7%
Model OO	-0.4%	-0.8%	5.7%	2.7%	10.9%	85.5%
Model PP	0.4%	-0.5%	5.8%	3.2%	10.7%	86.3%
Model QQ	-0.7%	-0.1%	4.1%	1.7%	9.2%	91.8%
Model RR	2.1%	0.7%	6.3%	2.1%	14.4%	84.6%
Model SS	1.4%	-0.4%	6.4%	3.1%	12.3%	83.6%
Model TT	0.5%	0.0%	3.4%	1.7%	7.4%	94.3%
Model UU	0.4%	0.0%	3.2%	1.7%	6.6%	94.6%
Model VV	0.4%	0.0%	3.2%	1.7%	6.3%	94.8%
Model WW	-1.3%	-0.8%	8.4%	3.0%	17.4%	78.3%
Model XX	1.5%	-0.4%	6.7%	3.2%	13.3%	82.9%
Model YY	-2.3%	-4.0%	9.9%	6.1%	17.0%	70.2%
Model ZZ	-1.5%	-2.9%	7.1%	4.8%	12.0%	83.3%

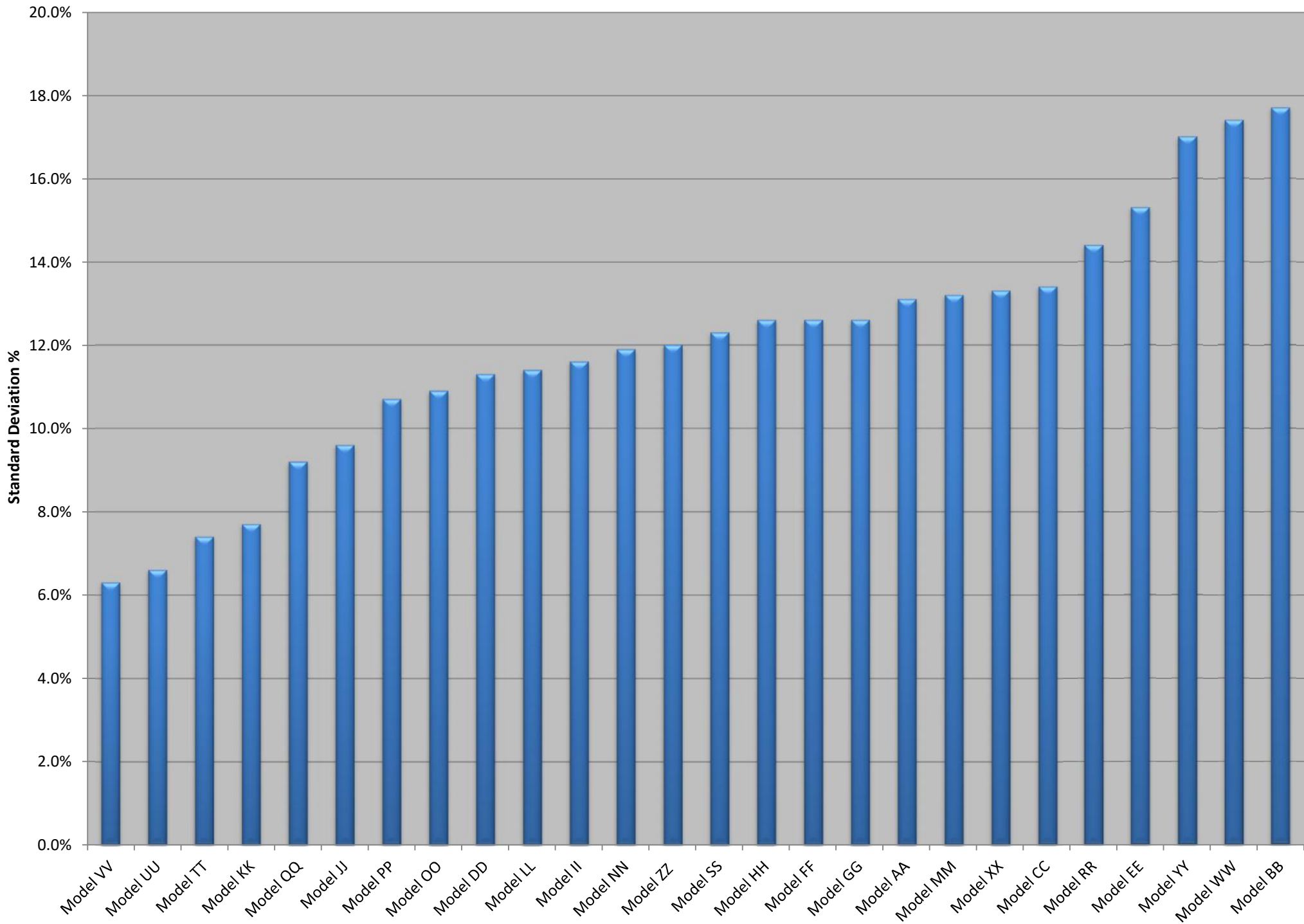
Model Test Vendor Summary

Median Error - All Models



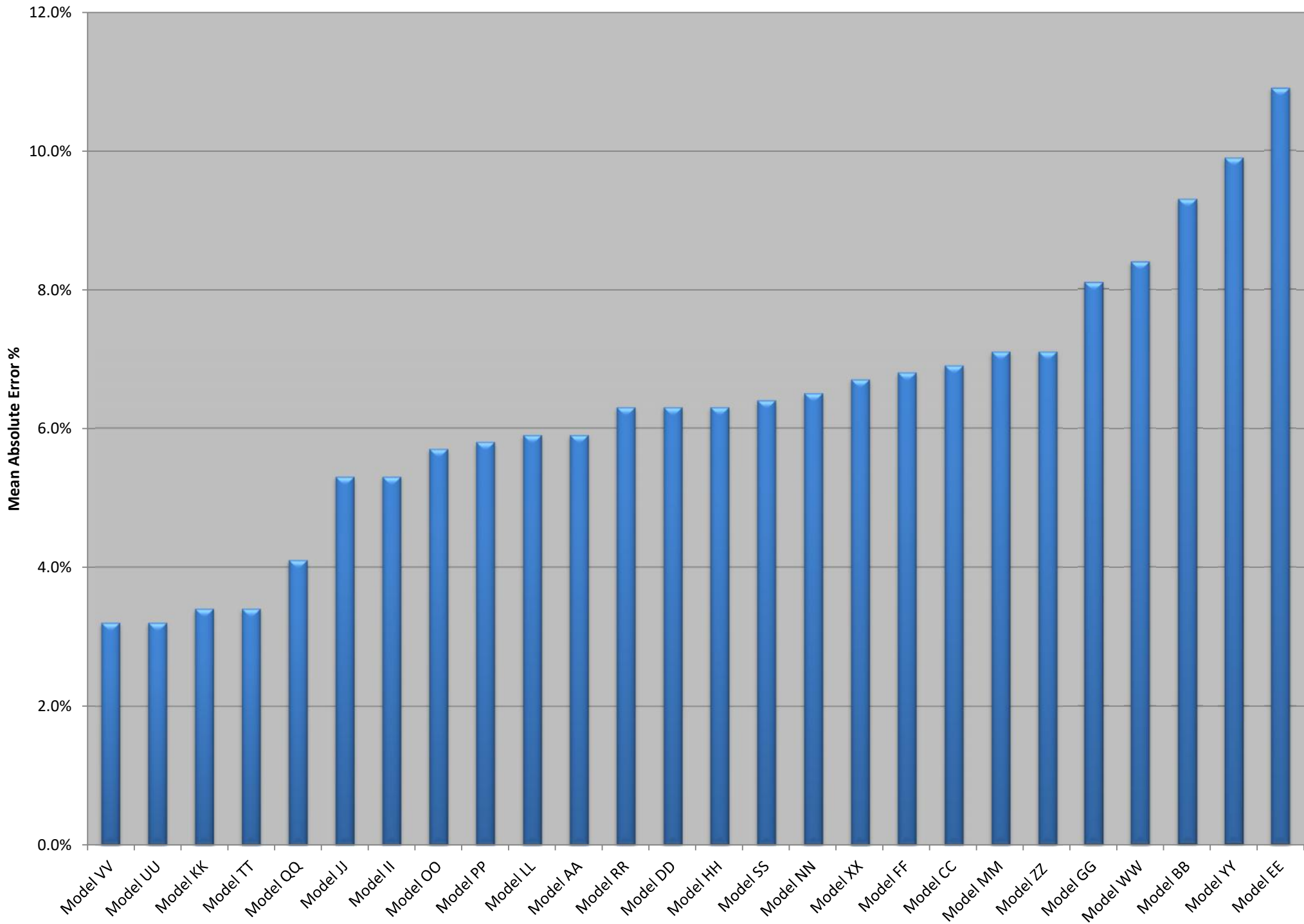
Model Test Vendor Summary

Standard Deviation - All Models



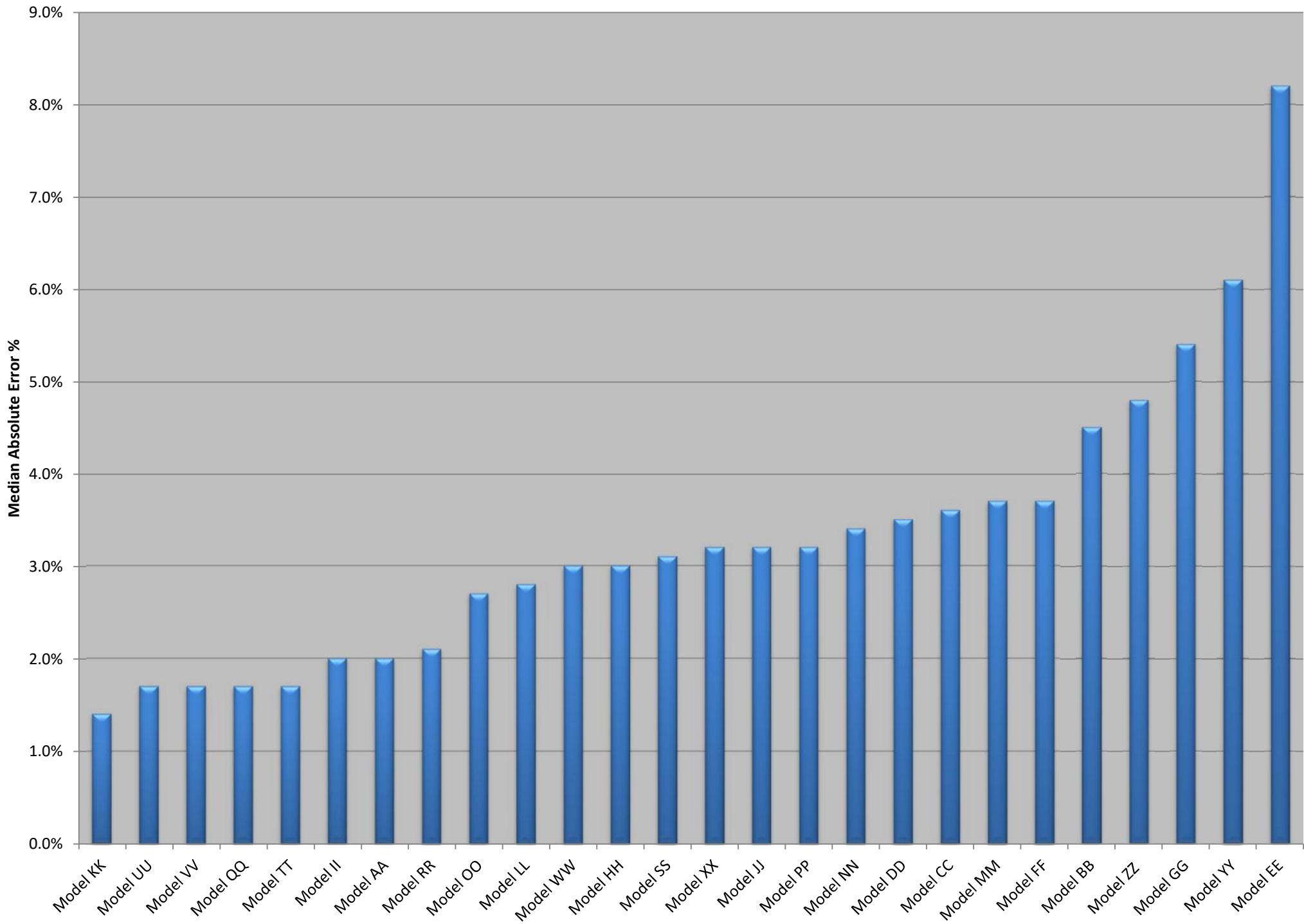
Model Test Vendor Summary

Mean Absolute Error - All Models



Model Test Vendor Summary

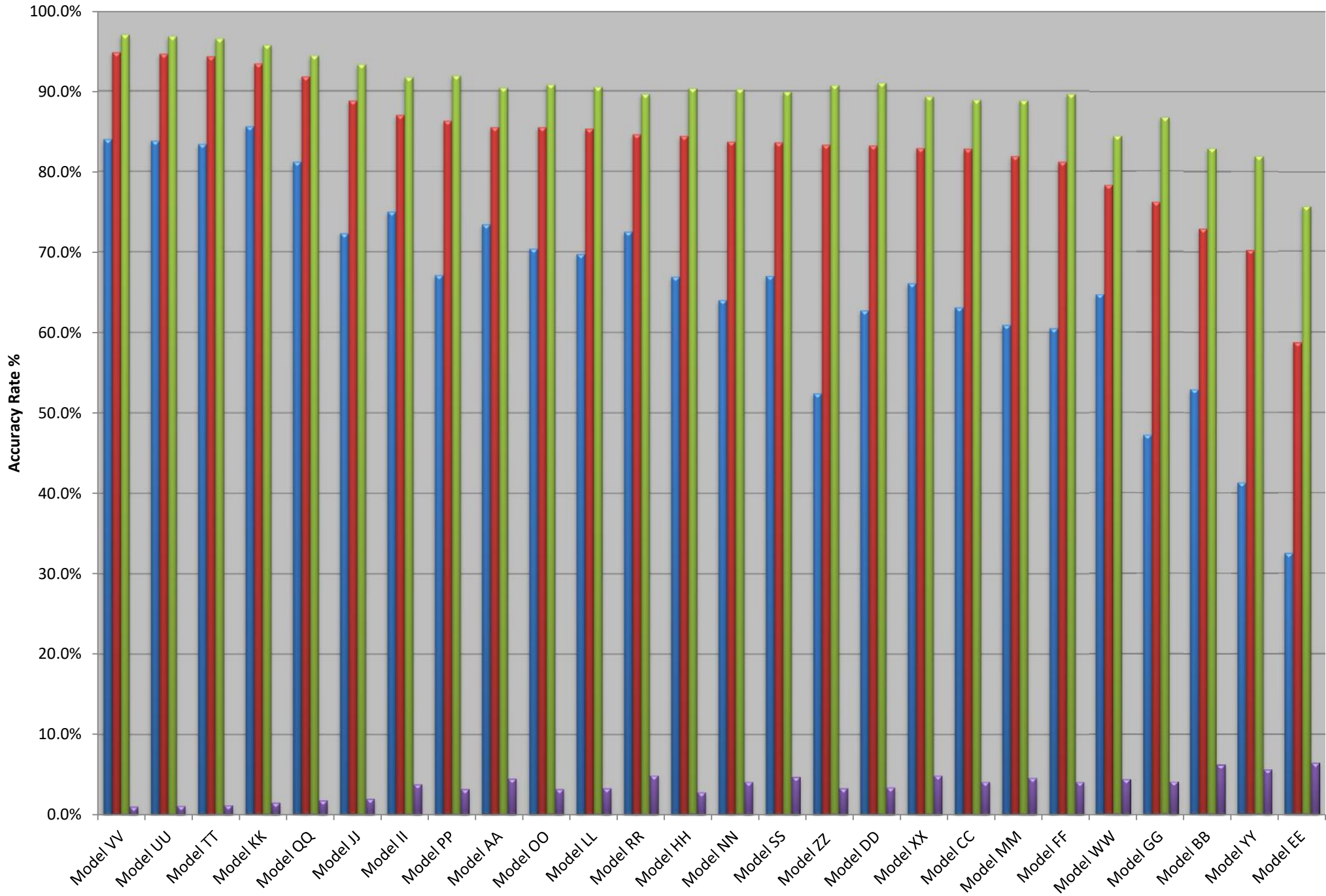
Median Absolute Error - All Models



Model Test Vendor Summary

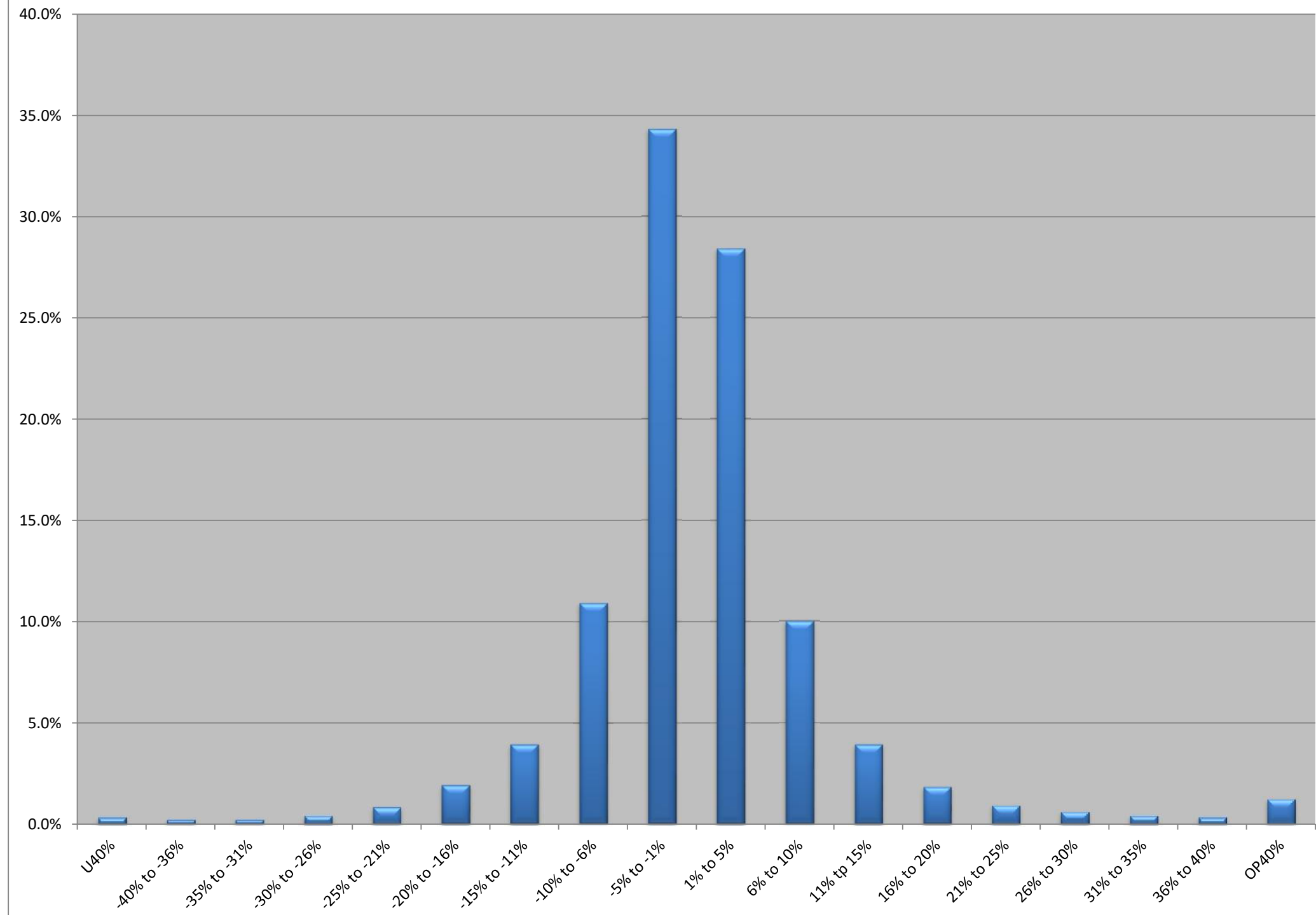
Accuracy Rate - All Models

PPE5% PPE10% PPE15% RT20%



Model Test

Error Frequency Distribution All Models



State	CA
-------	----

County Name	Model	Values														
		Records	Hits	HitRate	ME	MDE	SD	MAE	MDAE	PPE5%	PPE10%	PPE15%	PPE>20%	RT20%	LT20%	
Los Angeles	Model AA	9,125	8,945	98.0%	1.1%	0.5%	8.5%	3.5%	1.1%	82.7%	92.7%	95.9%	2.8%	2.0%	0.8%	
	Model BB	7,575	7,047	93.0%	-2.1%	-1.5%	11.8%	6.5%	3.4%	61.2%	80.9%	89.6%	6.5%	2.8%	3.7%	
	Model CC	7,480	7,223	96.6%	-0.4%	-1.1%	8.3%	4.9%	3.1%	69.8%	90.2%	95.6%	2.8%	2.1%	0.7%	
	Model DD	8,860	7,750	87.5%	0.0%	-0.3%	8.2%	5.1%	3.3%	65.8%	87.1%	94.6%	2.5%	1.9%	0.6%	
	Model EE	9,745	0	0.0%												
	Model FF	8,740	7,897	90.4%	0.1%	-0.3%	8.5%	5.2%	3.3%	65.3%	86.8%	94.4%	2.9%	2.2%	0.7%	
	Model GG	9,568	8,633	90.2%	0.0%	-0.9%	10.0%	6.6%	4.6%	54.2%	82.1%	91.0%	4.5%	2.7%	1.8%	
	Model HH	1,981	1,197	60.4%	-1.3%	-0.3%	9.3%	5.3%	2.8%	68.3%	87.8%	92.6%	4.4%	0.3%	4.1%	
	Model II	9,125	8,935	97.9%	1.1%	0.5%	8.1%	3.5%	1.1%	82.8%	92.8%	96.0%	2.7%	2.0%	0.8%	
	Model JJ	9,707	8,331	85.8%	-2.8%	-3.3%	7.2%	5.0%	3.8%	64.9%	90.7%	96.3%	1.9%	1.2%	0.7%	
	Model KK	8,813	8,657	98.2%	0.3%	0.5%	4.0%	2.0%	1.0%	93.2%	98.1%	99.1%	0.6%	0.4%	0.2%	
	Model LL	7,606	7,315	96.2%	-0.7%	-1.2%	8.1%	4.5%	2.7%	74.3%	91.4%	95.7%	2.6%	1.9%	0.7%	
	Model MM	9,494	9,251	97.4%	1.5%	0.3%	10.3%	4.9%	2.6%	70.8%	88.6%	94.2%	3.5%	3.0%	0.5%	
	Model NN	9,497	9,229	97.2%	1.4%	0.3%	8.7%	4.8%	2.6%	71.1%	88.9%	94.5%	3.2%	2.8%	0.4%	
	Model OO	7,655	7,148	93.4%	-0.3%	-0.7%	7.9%	4.2%	2.3%	77.1%	91.8%	95.8%	2.7%	2.0%	0.7%	
	Model PP	7,627	7,286	95.5%	0.1%	-0.6%	7.9%	4.7%	3.1%	70.0%	91.2%	95.9%	2.4%	2.1%	0.3%	
	Model QQ	8,815	8,670	98.4%	-0.3%	0.4%	4.5%	2.2%	1.0%	91.2%	97.5%	98.8%	0.6%	0.3%	0.3%	
	Model RR	9,124	8,958	98.2%	1.2%	0.5%	11.0%	3.7%	1.1%	82.6%	92.6%	95.8%	2.9%	2.1%	0.8%	
	Model SS	9,495	9,393	98.9%	1.4%	0.3%	8.6%	4.7%	2.4%	72.4%	89.2%	94.6%	3.3%	2.9%	0.4%	
	Model TT	8,723	8,608	98.7%	-0.1%	-0.1%	5.2%	2.6%	1.7%	85.7%	98.0%	99.3%	0.3%	0.2%	0.1%	
Model UU	8,727	8,604	98.6%	-0.1%	-0.1%	5.1%	2.6%	1.7%	85.8%	98.1%	99.3%	0.3%	0.2%	0.1%		
Model VV	8,730	8,596	98.5%	-0.1%	-0.1%	5.1%	2.6%	1.7%	85.8%	98.1%	99.3%	0.3%	0.2%	0.1%		
Model WW	9,676	9,441	97.6%	-2.4%	-0.7%	12.2%	5.7%	2.1%	74.6%	87.5%	91.7%	6.4%	1.6%	4.8%		
Model XX	9,482	9,438	99.5%	1.5%	0.3%	10.6%	4.7%	2.4%	72.4%	89.2%	94.5%	3.3%	2.9%	0.4%		
Model YY	9,470	9,399	99.3%	-3.9%	-4.6%	12.4%	7.7%	5.7%	43.5%	76.4%	89.2%	5.1%	2.3%	2.8%		
Model ZZ	9,411	8,936	95.0%	-2.6%	-3.4%	7.7%	5.7%	4.5%	55.6%	88.7%	95.5%	2.2%	1.4%	0.8%		

"proprietary and confidential"

Vendor Summary

Model	Records	Hits	HR %	ME	MDE	SD	MAE	MDAE	PPE5%	PPE10%	PPE15%	PPE20%	RT20%	LT20%	PPE>20%	U40%
Model BB	371,083	285,818	77.00%	-0.10%	-1.00%	17.70%	9.30%	4.50%	52.90%	72.90%	82.90%	88.50%	6.20%	5.30%	11.50%	0.70%
Model CC	355,535	323,384	91.00%	0.00%	-1.00%	13.40%	6.90%	3.60%	63.10%	82.80%	88.90%	92.50%	4.10%	3.40%	7.50%	0.50%
Model AA	439,404	417,320	95.00%	1.90%	0.70%	13.10%	5.90%	2.00%	73.40%	85.50%	90.40%	93.30%	4.50%	2.20%	6.70%	0.40%
Model DD	437,738	339,346	77.50%	0.60%	-0.40%	11.30%	6.30%	3.50%	62.70%	83.20%	91.00%	94.70%	3.40%	1.80%	5.30%	0.30%
Model EE	449,026	303,824	67.70%	-1.50%	-2.90%	15.30%	10.90%	8.20%	32.50%	58.70%	75.60%	86.40%	6.40%	7.20%	13.60%	0.30%
Model FF	435,907	360,821	82.80%	0.80%	-0.40%	12.60%	6.80%	3.70%	60.50%	81.20%	89.60%	93.70%	4.10%	2.20%	6.30%	0.30%
Model GG	446,666	338,669	75.80%	-0.60%	-1.80%	12.60%	8.10%	5.40%	47.20%	76.20%	86.70%	92.10%	4.10%	3.80%	7.90%	0.20%
Model HH	216,084	144,166	66.70%	0.80%	1.10%	12.60%	6.30%	3.00%	66.90%	84.40%	90.30%	93.90%	2.80%	3.30%	6.10%	1.00%
Model II	439,967	406,019	92.30%	1.70%	0.70%	11.60%	5.30%	2.00%	75.00%	87.00%	91.70%	94.40%	3.80%	1.80%	5.60%	0.30%
Model JJ	458,680	368,075	80.20%	-1.80%	-2.50%	9.60%	5.30%	3.20%	72.30%	88.80%	93.30%	95.70%	2.00%	2.20%	4.30%	0.30%
Model KK	401,604	377,779	94.10%	0.10%	0.30%	7.70%	3.40%	1.40%	85.60%	93.40%	95.70%	97.30%	1.50%	1.30%	2.70%	0.30%
Model LL	364,530	320,702	88.00%	-0.30%	-0.80%	11.40%	5.90%	2.80%	69.70%	85.30%	90.50%	93.60%	3.30%	3.00%	6.40%	0.40%
Model MM	437,257	414,194	94.70%	0.60%	-1.00%	13.20%	7.10%	3.70%	60.90%	81.90%	88.80%	92.60%	4.60%	2.80%	7.40%	0.40%
Model NN	440,879	394,952	89.60%	0.70%	-0.70%	11.90%	6.50%	3.40%	64.00%	83.70%	90.20%	93.70%	4.10%	2.20%	6.30%	0.20%
Model OO	372,091	282,860	76.00%	-0.40%	-0.80%	10.90%	5.70%	2.70%	70.40%	85.50%	90.80%	93.80%	3.20%	3.00%	6.20%	0.30%
Model PP	368,303	306,157	83.10%	0.40%	-0.50%	10.70%	5.80%	3.20%	67.10%	86.30%	91.90%	94.70%	3.20%	2.00%	5.30%	0.20%
Model QQ	402,286	386,081	96.00%	-0.70%	-0.10%	9.20%	4.10%	1.70%	81.20%	91.80%	94.40%	96.10%	1.80%	2.10%	3.90%	0.40%
Model RR	439,048	423,249	96.40%	2.10%	0.70%	14.40%	6.30%	2.10%	72.50%	84.60%	89.60%	92.60%	4.90%	2.50%	7.40%	0.50%
Model SS	443,237	416,178	93.90%	1.40%	-0.40%	12.30%	6.40%	3.10%	67.00%	83.60%	89.90%	93.40%	4.70%	1.90%	6.60%	0.30%
Model TT	396,259	386,794	97.60%	0.50%	0.00%	7.40%	3.40%	1.70%	83.40%	94.30%	96.50%	98.00%	1.20%	0.70%	2.00%	0.10%
Model UU	397,666	384,230	96.60%	0.40%	0.00%	6.60%	3.20%	1.70%	83.80%	94.60%	96.80%	98.30%	1.10%	0.60%	1.70%	0.10%
Model VV	398,558	382,853	96.10%	0.40%	0.00%	6.30%	3.20%	1.70%	84.00%	94.80%	97.00%	98.40%	1.00%	0.60%	1.60%	0.00%
Model WW	455,347	427,447	93.90%	-1.30%	-0.80%	17.40%	8.40%	3.00%	64.70%	78.30%	84.40%	88.40%	4.40%	7.10%	11.60%	2.70%
Model XX	439,947	427,546	97.20%	1.50%	-0.40%	13.30%	6.70%	3.20%	66.10%	82.90%	89.30%	92.90%	4.90%	2.20%	7.10%	0.40%
Model YY	431,142	415,712	96.40%	-2.30%	-4.00%	17.00%	9.90%	6.10%	41.30%	70.20%	81.90%	88.20%	5.60%	6.20%	11.80%	0.80%
Model ZZ	428,657	359,986	84.00%	-1.50%	-2.90%	12.00%	7.10%	4.80%	52.40%	83.30%	90.70%	94.20%	3.30%	2.50%	5.80%	0.20%

"proprietary and confidential"

Vendor Summary

-40% to -31	-35% to -3	-30% to -21	-25% to -2	-20% to -11	-15% to -1	-10% to -6	-5% to -1	1% to 5%	6% to 10%	11% tp 15'	16% to 20'	21% to 25'	26% to 30'	31% to 35'	36% to 40'	OP40%
0.50%	0.70%	1.30%	2.20%	4.00%	7.10%	13.50%	28.40%	24.50%	6%	2.90%	1.70%	1.20%	0.80%	0.70%	0.50%	3.00%
0.20%	0.40%	0.80%	1.50%	2.00%	3.40%	12.20%	37.20%	25.80%	8%	2.80%	1.60%	0.90%	0.70%	0.50%	0.40%	1.60%
0.20%	0.30%	0.40%	0.90%	1.40%	2.00%	4.40%	31.80%	41.60%	8%	2.90%	1.60%	1.00%	0.70%	0.50%	0.40%	1.90%
0.20%	0.20%	0.40%	0.80%	1.90%	3.90%	10.90%	34.30%	28.40%	10%	3.90%	1.80%	0.90%	0.60%	0.40%	0.30%	1.20%
0.20%	0.50%	2.20%	4.10%	7.20%	11.20%	16.40%	17.90%	14.60%	10%	5.80%	3.60%	2.20%	1.40%	0.60%	0.50%	1.70%
0.20%	0.30%	0.40%	1.00%	2.10%	4.10%	10.90%	33.00%	27.50%	10%	4.20%	2.10%	1.10%	0.70%	0.50%	0.40%	1.40%
0.20%	0.40%	0.70%	2.30%	3.50%	5.90%	18.60%	27.20%	19.90%	10%	4.50%	1.90%	1.00%	0.80%	0.50%	0.40%	1.40%
0.30%	0.40%	0.50%	1.10%	2.20%	2.40%	4.90%	27.80%	39.10%	13%	3.50%	1.40%	0.80%	0.50%	0.40%	0.20%	0.90%
0.20%	0.20%	0.30%	0.80%	1.20%	1.80%	4.30%	32.50%	42.60%	8%	2.80%	1.50%	0.90%	0.60%	0.50%	0.30%	1.50%
0.20%	0.20%	0.40%	1.10%	1.70%	2.90%	12.50%	54.70%	17.60%	4%	1.50%	0.80%	0.50%	0.30%	0.30%	0.20%	0.80%
0.10%	0.10%	0.20%	0.60%	1.00%	1.20%	3.70%	36.80%	48.70%	4%	1.10%	0.60%	0.40%	0.20%	0.20%	0.10%	0.50%
0.20%	0.40%	0.70%	1.40%	1.80%	2.90%	9.50%	41.80%	27.90%	6%	2.40%	1.30%	0.80%	0.60%	0.40%	0.30%	1.20%
0.20%	0.40%	0.60%	1.10%	1.90%	3.10%	12.40%	37.00%	23.90%	9%	3.70%	1.90%	1.20%	0.80%	0.50%	0.40%	1.70%
0.20%	0.30%	0.50%	1.00%	1.70%	2.80%	10.80%	38.60%	25.40%	9%	3.70%	1.90%	1.10%	0.70%	0.50%	0.40%	1.50%
0.20%	0.40%	0.70%	1.40%	1.80%	3.00%	9.40%	41.80%	28.50%	6%	2.30%	1.20%	0.80%	0.60%	0.40%	0.30%	1.20%
0.10%	0.20%	0.50%	1.10%	1.40%	2.60%	10.60%	37.80%	29.30%	9%	3.00%	1.40%	0.90%	0.60%	0.40%	0.30%	1.10%
0.20%	0.20%	0.40%	0.90%	1.20%	1.70%	7.80%	37.80%	43.40%	3%	0.90%	0.60%	0.40%	0.30%	0.20%	0.20%	0.70%
0.20%	0.30%	0.50%	0.90%	1.40%	2.00%	4.40%	31.40%	41.10%	8%	2.90%	1.60%	1.00%	0.70%	0.60%	0.40%	2.20%
0.20%	0.30%	0.40%	0.80%	1.50%	2.40%	7.40%	39.90%	27.10%	9%	3.90%	2.00%	1.20%	0.80%	0.60%	0.40%	1.70%
0.10%	0.10%	0.10%	0.40%	1.00%	1.00%	4.00%	44.10%	39.30%	7%	1.30%	0.60%	0.30%	0.20%	0.10%	0.10%	0.50%
0.00%	0.10%	0.10%	0.30%	0.90%	0.90%	4.00%	44.40%	39.50%	7%	1.30%	0.50%	0.30%	0.20%	0.10%	0.10%	0.40%
0.00%	0.10%	0.10%	0.30%	0.90%	0.90%	4.00%	44.50%	39.60%	7%	1.30%	0.50%	0.30%	0.20%	0.10%	0.10%	0.30%
0.70%	0.90%	1.20%	1.70%	2.40%	3.30%	7.00%	38.50%	26.30%	7%	2.80%	1.60%	1.00%	0.70%	0.50%	0.40%	1.80%
0.20%	0.30%	0.40%	0.90%	1.60%	2.50%	7.70%	39.40%	26.60%	9%	3.90%	2.00%	1.20%	0.80%	0.60%	0.40%	1.90%
0.50%	0.80%	1.40%	2.70%	4.50%	8.70%	23.70%	29.20%	12.10%	5%	3.00%	1.90%	1.30%	0.90%	0.70%	0.50%	2.20%
0.20%	0.30%	0.60%	1.20%	2.10%	4.70%	24.20%	34.80%	17.50%	7%	2.70%	1.40%	0.80%	0.60%	0.40%	0.30%	1.30%