

“proprietary and confidential”

Advanced Model Performance Sample

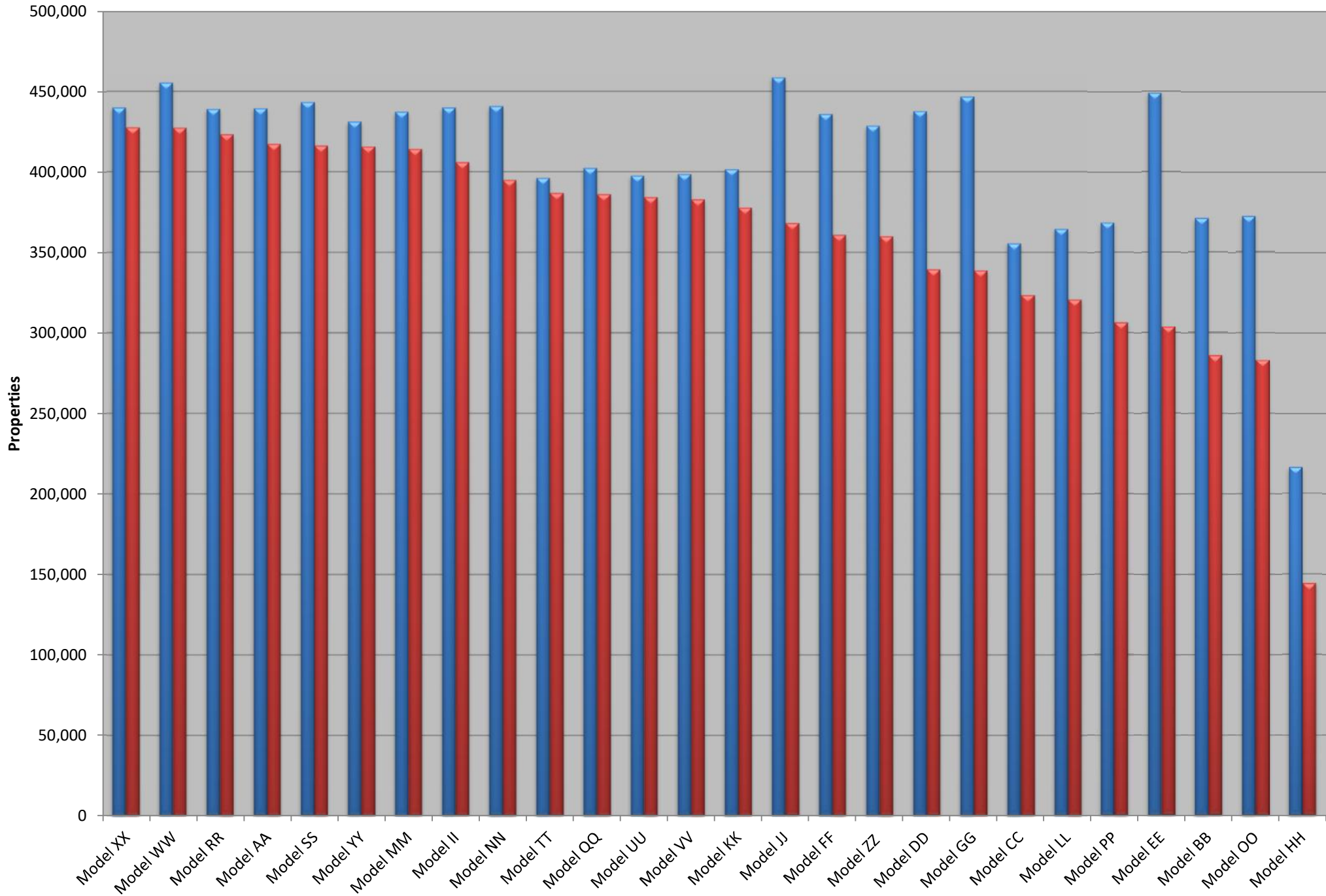
The following pages show the charts and some of the tables that accompany them. Some tables are too large to print, so only selections are shown here.

Furthermore, each chart is based on a pivot table. Users can change the parameters of the pivot tables and use the pivot data directly.

Model Test Vendor Summary

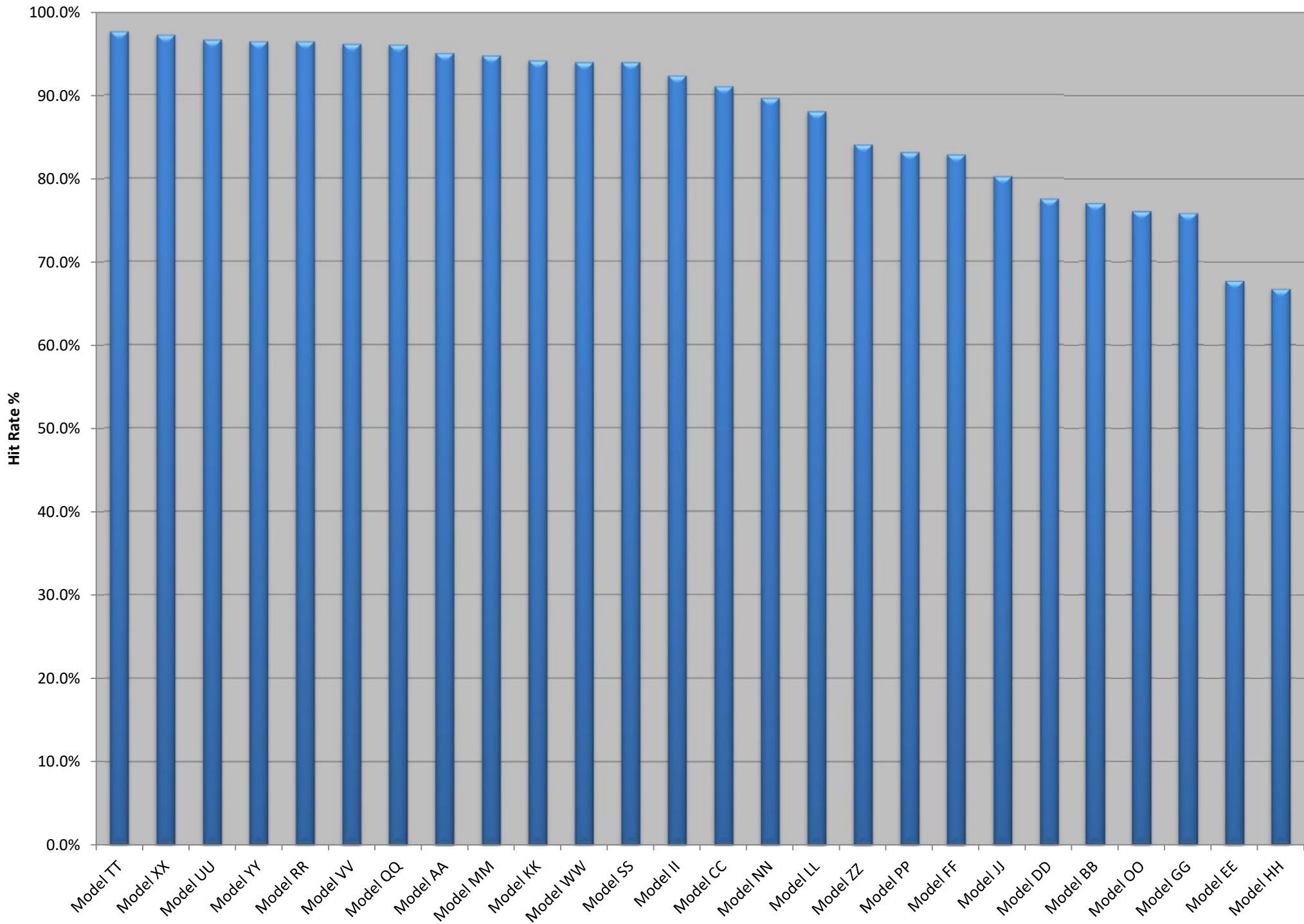
Record Counts - All Models

Records Hits



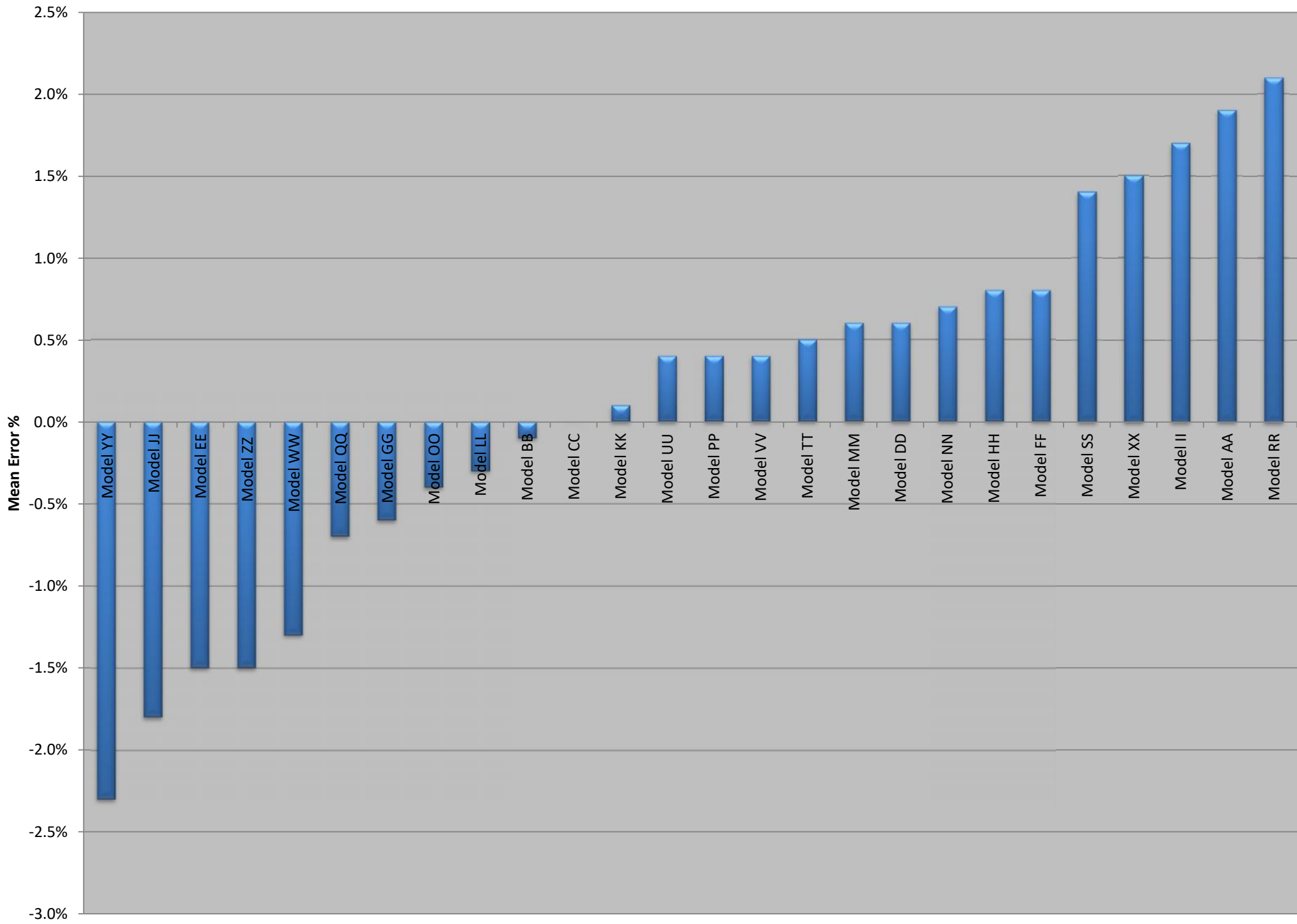
Model Test Vendor Summary

Hit Rate - All Models



Model Test Vendor Summary

Mean Error - All Models

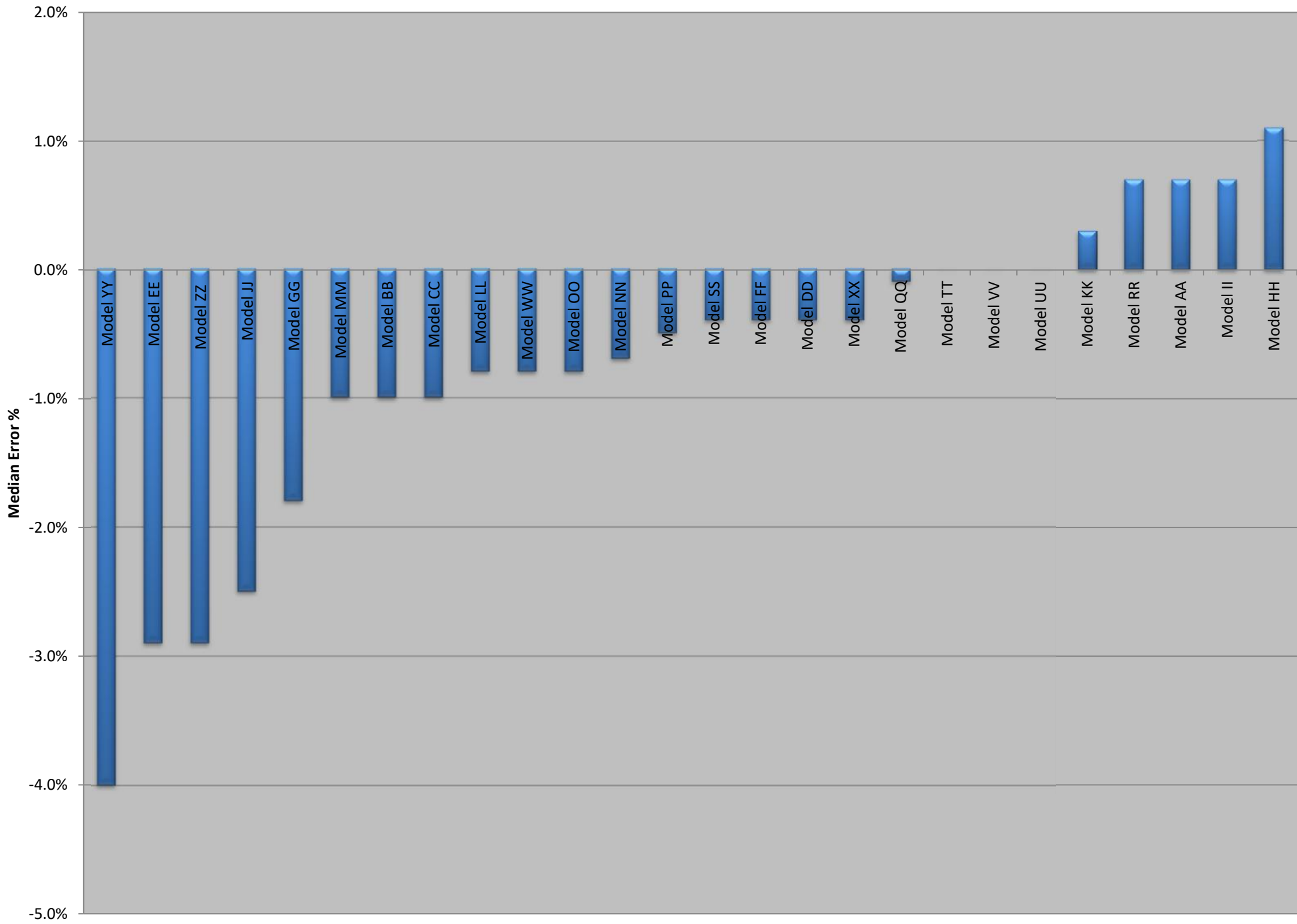


“proprietary and confidential”

	Data					
Model	Mean Error	MDE	MAE	MDAE	SD	PPE10%
Model AA	1.9%	0.7%	5.9%	2.0%	13.1%	85.5%
Model BB	-0.1%	-1.0%	9.3%	4.5%	17.7%	72.9%
Model CC	0.0%	-1.0%	6.9%	3.6%	13.4%	82.8%
Model DD	0.6%	-0.4%	6.3%	3.5%	11.3%	83.2%
Model EE	-1.5%	-2.9%	10.9%	8.2%	15.3%	58.7%
Model FF	0.8%	-0.4%	6.8%	3.7%	12.6%	81.2%
Model GG	-0.6%	-1.8%	8.1%	5.4%	12.6%	76.2%
Model HH	0.8%	1.1%	6.3%	3.0%	12.6%	84.4%
Model II	1.7%	0.7%	5.3%	2.0%	11.6%	87.0%
Model JJ	-1.8%	-2.5%	5.3%	3.2%	9.6%	88.8%
Model KK	0.1%	0.3%	3.4%	1.4%	7.7%	93.4%
Model LL	-0.3%	-0.8%	5.9%	2.8%	11.4%	85.3%
Model MM	0.6%	-1.0%	7.1%	3.7%	13.2%	81.9%
Model NN	0.7%	-0.7%	6.5%	3.4%	11.9%	83.7%
Model OO	-0.4%	-0.8%	5.7%	2.7%	10.9%	85.5%
Model PP	0.4%	-0.5%	5.8%	3.2%	10.7%	86.3%
Model QQ	-0.7%	-0.1%	4.1%	1.7%	9.2%	91.8%
Model RR	2.1%	0.7%	6.3%	2.1%	14.4%	84.6%
Model SS	1.4%	-0.4%	6.4%	3.1%	12.3%	83.6%
Model TT	0.5%	0.0%	3.4%	1.7%	7.4%	94.3%
Model UU	0.4%	0.0%	3.2%	1.7%	6.6%	94.6%
Model VV	0.4%	0.0%	3.2%	1.7%	6.3%	94.8%
Model WW	-1.3%	-0.8%	8.4%	3.0%	17.4%	78.3%
Model XX	1.5%	-0.4%	6.7%	3.2%	13.3%	82.9%
Model YY	-2.3%	-4.0%	9.9%	6.1%	17.0%	70.2%
Model ZZ	-1.5%	-2.9%	7.1%	4.8%	12.0%	83.3%

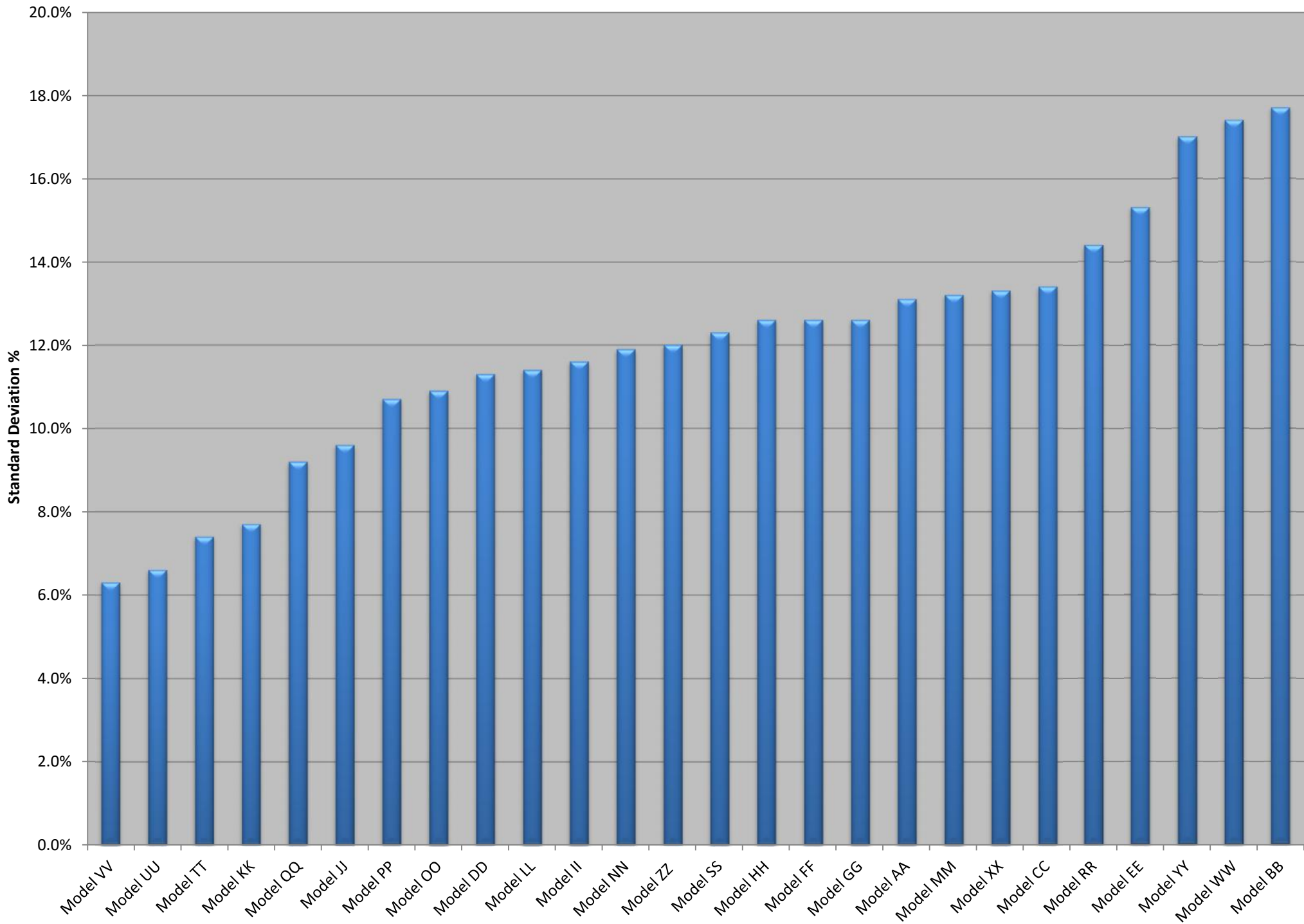
Model Test Vendor Summary

Median Error - All Models



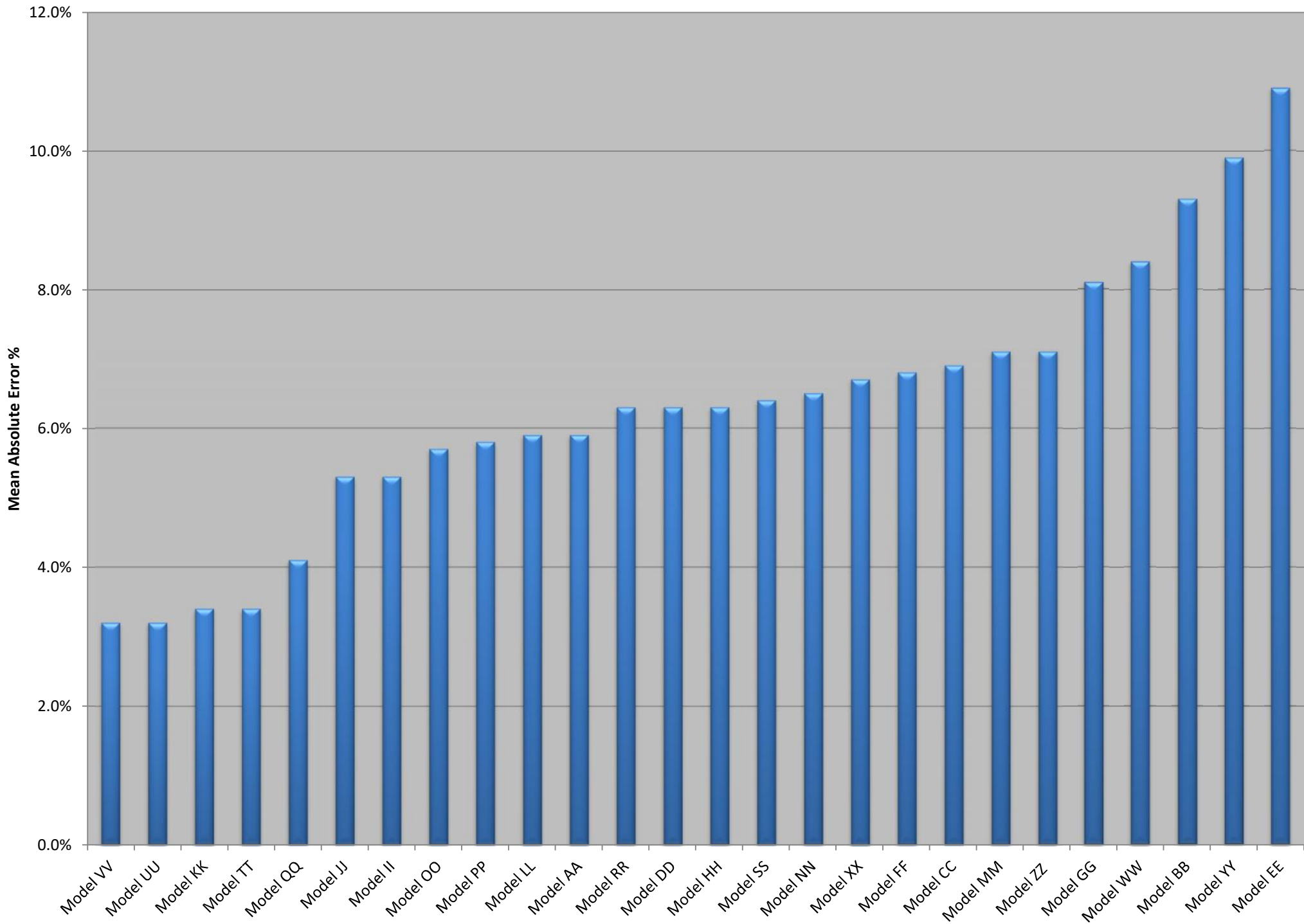
Model Test Vendor Summary

Standard Deviation - All Models



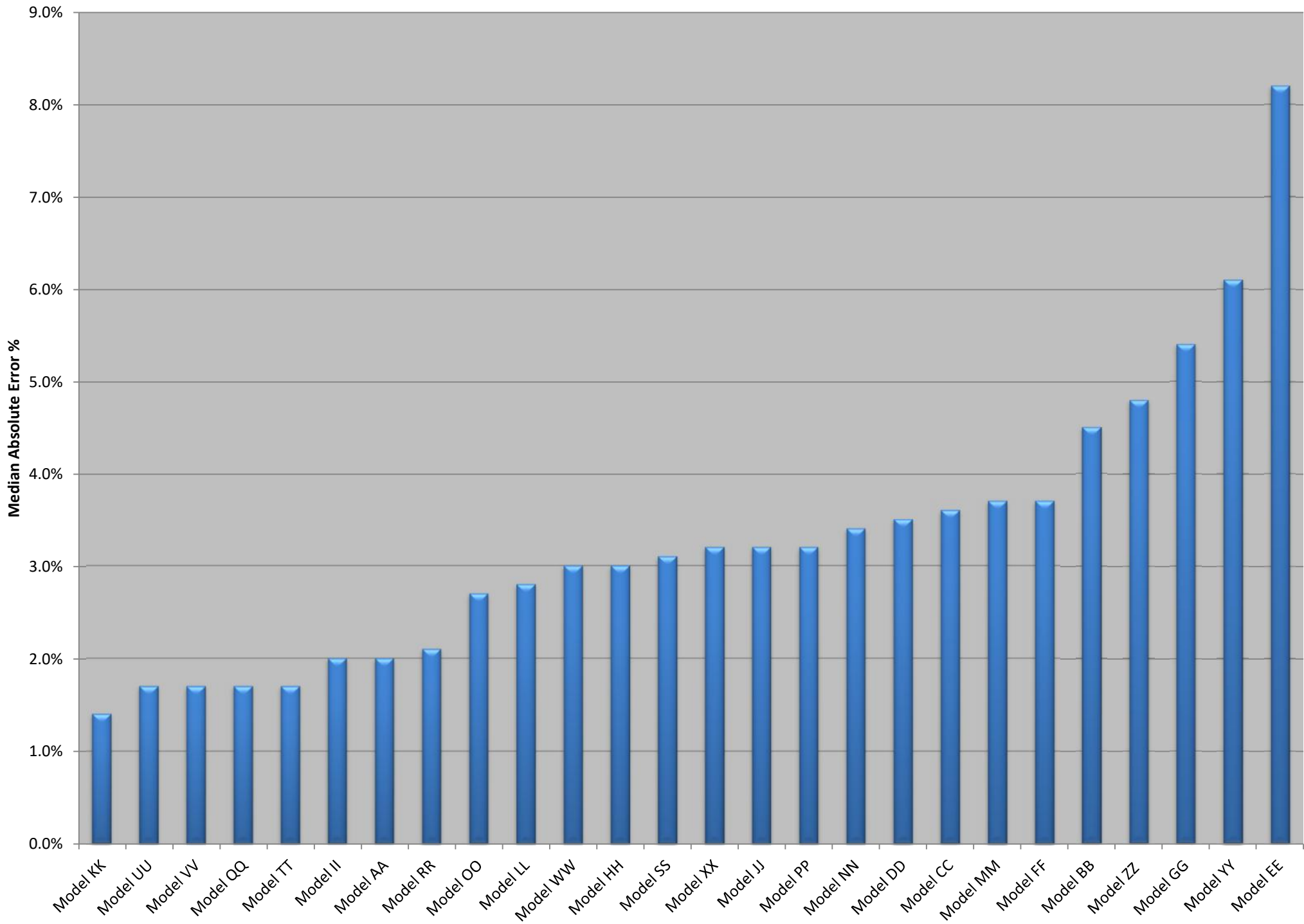
Model Test Vendor Summary

Mean Absolute Error - All Models



Model Test Vendor Summary

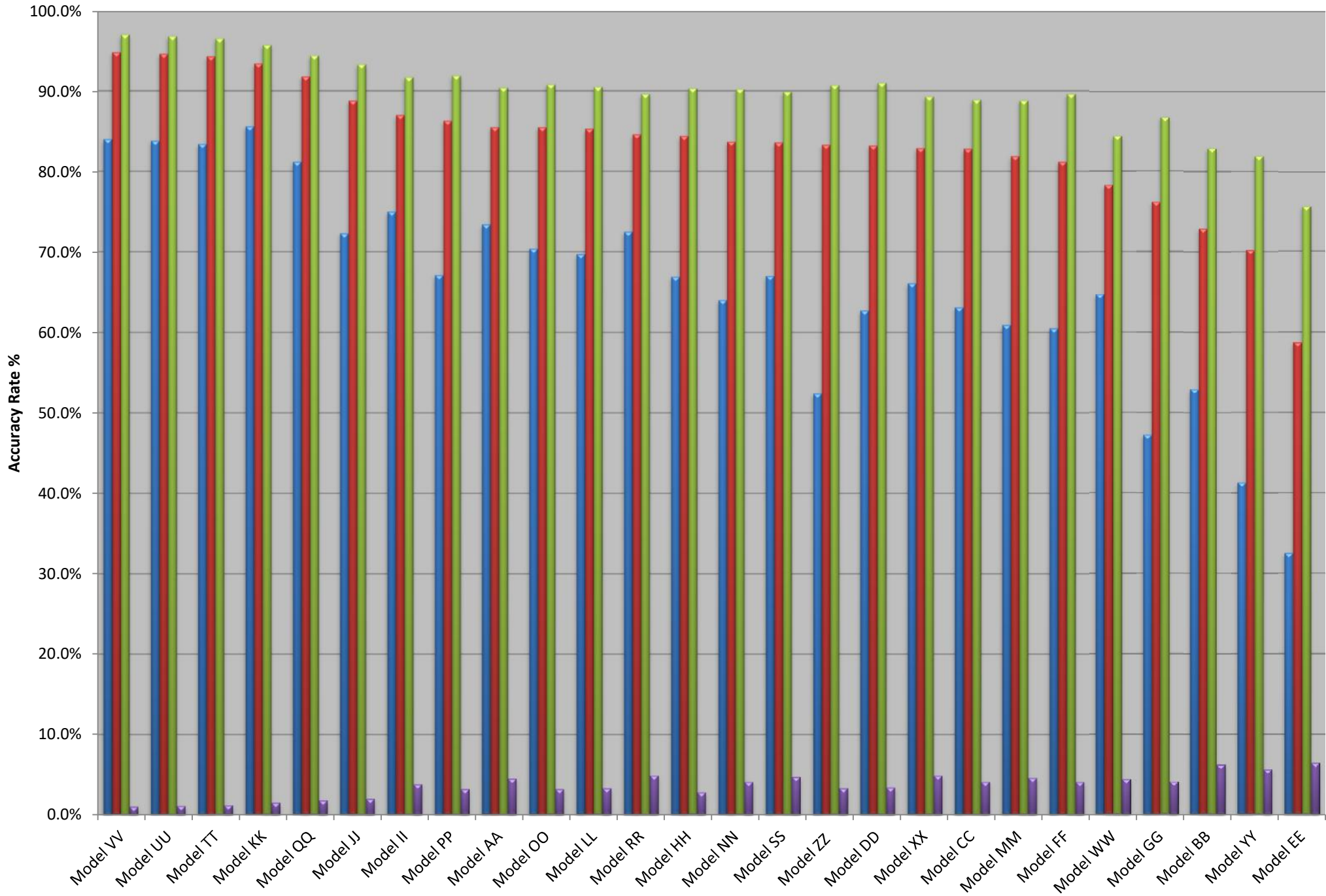
Median Absolute Error - All Models



Model Test Vendor Summary

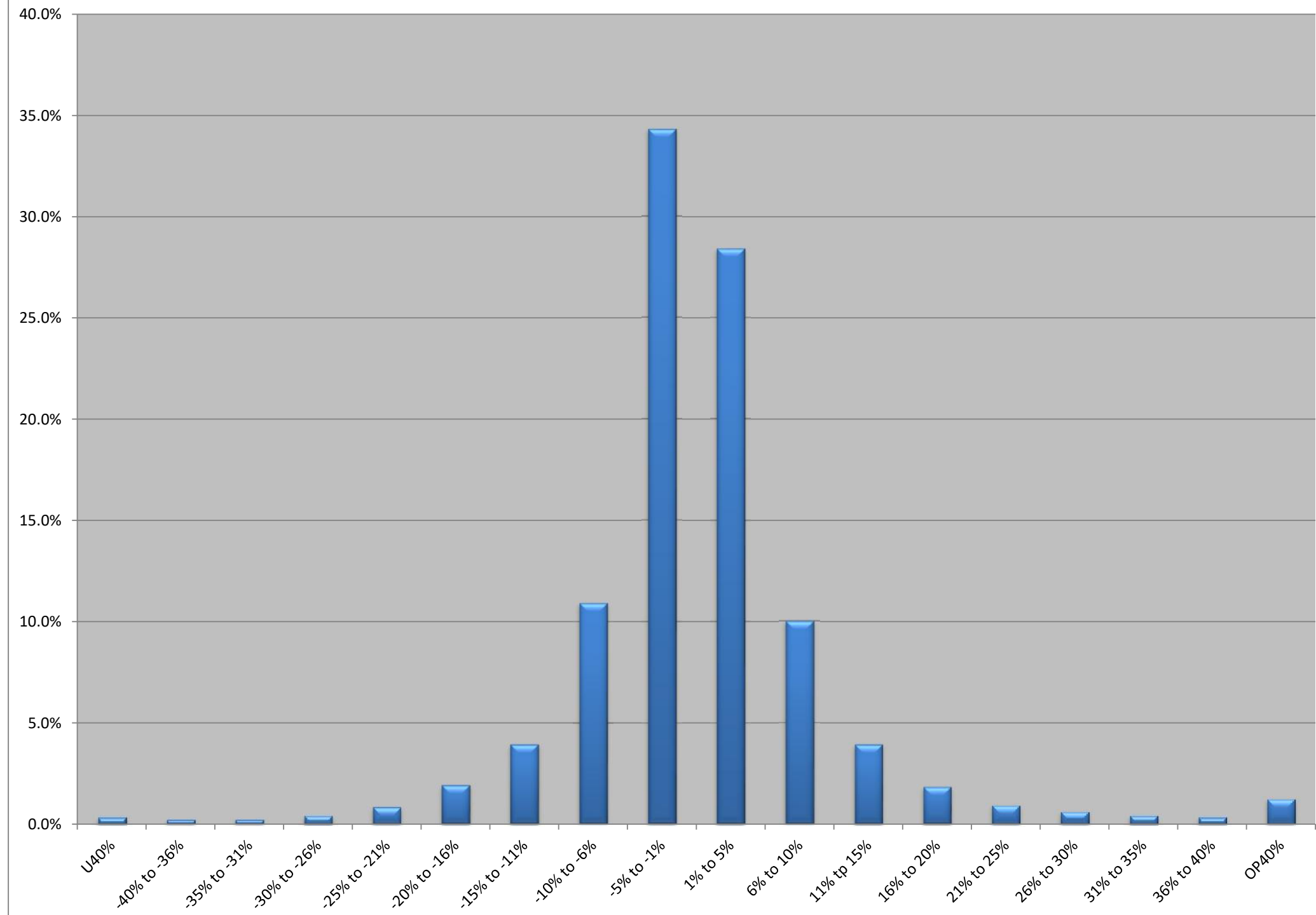
Accuracy Rate - All Models

PPE5% PPE10% PPE15% RT20%



Model Test

Error Frequency Distribution All Models



State	CA
-------	----

County Name	Model	Values														
		Records	Hits	HitRate	ME	MDE	SD	MAE	MDAE	PPE5%	PPE10%	PPE15%	PPE>20%	RT20%	LT20%	
Los Angeles	Model AA	9,125	8,945	98.0%	1.1%	0.5%	8.5%	3.5%	1.1%	82.7%	92.7%	95.9%	2.8%	2.0%	0.8%	
	Model BB	7,575	7,047	93.0%	-2.1%	-1.5%	11.8%	6.5%	3.4%	61.2%	80.9%	89.6%	6.5%	2.8%	3.7%	
	Model CC	7,480	7,223	96.6%	-0.4%	-1.1%	8.3%	4.9%	3.1%	69.8%	90.2%	95.6%	2.8%	2.1%	0.7%	
	Model DD	8,860	7,750	87.5%	0.0%	-0.3%	8.2%	5.1%	3.3%	65.8%	87.1%	94.6%	2.5%	1.9%	0.6%	
	Model EE	9,745	0	0.0%												
	Model FF	8,740	7,897	90.4%	0.1%	-0.3%	8.5%	5.2%	3.3%	65.3%	86.8%	94.4%	2.9%	2.2%	0.7%	
	Model GG	9,568	8,633	90.2%	0.0%	-0.9%	10.0%	6.6%	4.6%	54.2%	82.1%	91.0%	4.5%	2.7%	1.8%	
	Model HH	1,981	1,197	60.4%	-1.3%	-0.3%	9.3%	5.3%	2.8%	68.3%	87.8%	92.6%	4.4%	0.3%	4.1%	
	Model II	9,125	8,935	97.9%	1.1%	0.5%	8.1%	3.5%	1.1%	82.8%	92.8%	96.0%	2.7%	2.0%	0.8%	
	Model JJ	9,707	8,331	85.8%	-2.8%	-3.3%	7.2%	5.0%	3.8%	64.9%	90.7%	96.3%	1.9%	1.2%	0.7%	
	Model KK	8,813	8,657	98.2%	0.3%	0.5%	4.0%	2.0%	1.0%	93.2%	98.1%	99.1%	0.6%	0.4%	0.2%	
	Model LL	7,606	7,315	96.2%	-0.7%	-1.2%	8.1%	4.5%	2.7%	74.3%	91.4%	95.7%	2.6%	1.9%	0.7%	
	Model MM	9,494	9,251	97.4%	1.5%	0.3%	10.3%	4.9%	2.6%	70.8%	88.6%	94.2%	3.5%	3.0%	0.5%	
	Model NN	9,497	9,229	97.2%	1.4%	0.3%	8.7%	4.8%	2.6%	71.1%	88.9%	94.5%	3.2%	2.8%	0.4%	
	Model OO	7,655	7,148	93.4%	-0.3%	-0.7%	7.9%	4.2%	2.3%	77.1%	91.8%	95.8%	2.7%	2.0%	0.7%	
	Model PP	7,627	7,286	95.5%	0.1%	-0.6%	7.9%	4.7%	3.1%	70.0%	91.2%	95.9%	2.4%	2.1%	0.3%	
	Model QQ	8,815	8,670	98.4%	-0.3%	0.4%	4.5%	2.2%	1.0%	91.2%	97.5%	98.8%	0.6%	0.3%	0.3%	
	Model RR	9,124	8,958	98.2%	1.2%	0.5%	11.0%	3.7%	1.1%	82.6%	92.6%	95.8%	2.9%	2.1%	0.8%	
	Model SS	9,495	9,393	98.9%	1.4%	0.3%	8.6%	4.7%	2.4%	72.4%	89.2%	94.6%	3.3%	2.9%	0.4%	
	Model TT	8,723	8,608	98.7%	-0.1%	-0.1%	5.2%	2.6%	1.7%	85.7%	98.0%	99.3%	0.3%	0.2%	0.1%	
Model UU	8,727	8,604	98.6%	-0.1%	-0.1%	5.1%	2.6%	1.7%	85.8%	98.1%	99.3%	0.3%	0.2%	0.1%		
Model VV	8,730	8,596	98.5%	-0.1%	-0.1%	5.1%	2.6%	1.7%	85.8%	98.1%	99.3%	0.3%	0.2%	0.1%		
Model WW	9,676	9,441	97.6%	-2.4%	-0.7%	12.2%	5.7%	2.1%	74.6%	87.5%	91.7%	6.4%	1.6%	4.8%		
Model XX	9,482	9,438	99.5%	1.5%	0.3%	10.6%	4.7%	2.4%	72.4%	89.2%	94.5%	3.3%	2.9%	0.4%		
Model YY	9,470	9,399	99.3%	-3.9%	-4.6%	12.4%	7.7%	5.7%	43.5%	76.4%	89.2%	5.1%	2.3%	2.8%		
Model ZZ	9,411	8,936	95.0%	-2.6%	-3.4%	7.7%	5.7%	4.5%	55.6%	88.7%	95.5%	2.2%	1.4%	0.8%		

“proprietary and confidential”

MPT Example

StateCode	Location Group	County	Vendor 1	Model 1	Vendor 2	Model 2
AZ	AZ027	Yuma	Vendor E	Model EE	Vendor A	Model XY
CA	CA053	Monterey	Vendor B	Model CG	Vendor C	Model JG
CA	CA029	Kern	Vendor K	Model KT	Vendor A	Model XY
CA	CA019	Fresno	Vendor K	Model KT	Vendor A	Model XF
CA	CA065	Riverside	Vendor B	Model CG	Vendor C	Model JG
CA	CA075	San Francisco	Vendor A	Model XY	Vendor B	Model KJ
CA	CA115	Yuba	Vendor C	Model JG	Vendor A	Model XY
CA	CA111	Ventura	Vendor C	Model JG	Vendor A	Model XF
AZ	AZ015	Mohave	Vendor C	Model CB	Vendor F	Model FA
AL	AL		Vendor A	Model XY	Vendor D	Model TS
AZ	AZ025	Yavapai	Vendor B	Model CG	Vendor C	Model CB
CA	CA059	Orange	Vendor A	Model XP	Vendor B	Model CG
CA	CA071	San Bernardino	Vendor C	Model CB	Vendor B	Model CG
CA	CA		Vendor C	Model CB	Vendor A	Model XY
CA	CA057	Nevada	Vendor C	Model CB	Vendor J	Model IM
AZ	AZ017	Navajo	Vendor E	Model EE	Vendor A	Model XY
AR	AR119	Pulaski	Vendor A	Model XY	Vendor B	Model CG
CA	CA107	Tulare	Vendor A	Model XY	Vendor B	Model CG
CA	CA007	Butte	Vendor A	Model XY	Vendor C	Model JG
AZ	AZ019	Pima	Vendor C	Model CB	Vendor E	Model EE
CA	CA013	Contra Costa	Vendor C	Model CB	Vendor A	Model XY
AR	AR007	Benton	Vendor B	Model CG	Vendor A	Model XY
CA	CA037	Los Angeles	Vendor B	Model CG	Vendor A	Model XY
CA	CA061	Placer	Vendor K	Model KT	Vendor A	Model XY
CA	CA067	Sacramento	Vendor B	Model CG	Vendor A	Model XY
AK	AK		Vendor A	Model XY	Vendor E	Model EE

"proprietary and confidential"

Vendor Summary

Model	Records	Hits	HR %	ME	MDE	SD	MAE	MDAE	PPE5%	PPE10%	PPE15%	PPE20%	RT20%	LT20%	PPE>20%	U40%
Model BB	371,083	285,818	77.00%	-0.10%	-1.00%	17.70%	9.30%	4.50%	52.90%	72.90%	82.90%	88.50%	6.20%	5.30%	11.50%	0.70%
Model CC	355,535	323,384	91.00%	0.00%	-1.00%	13.40%	6.90%	3.60%	63.10%	82.80%	88.90%	92.50%	4.10%	3.40%	7.50%	0.50%
Model AA	439,404	417,320	95.00%	1.90%	0.70%	13.10%	5.90%	2.00%	73.40%	85.50%	90.40%	93.30%	4.50%	2.20%	6.70%	0.40%
Model DD	437,738	339,346	77.50%	0.60%	-0.40%	11.30%	6.30%	3.50%	62.70%	83.20%	91.00%	94.70%	3.40%	1.80%	5.30%	0.30%
Model EE	449,026	303,824	67.70%	-1.50%	-2.90%	15.30%	10.90%	8.20%	32.50%	58.70%	75.60%	86.40%	6.40%	7.20%	13.60%	0.30%
Model FF	435,907	360,821	82.80%	0.80%	-0.40%	12.60%	6.80%	3.70%	60.50%	81.20%	89.60%	93.70%	4.10%	2.20%	6.30%	0.30%
Model GG	446,666	338,669	75.80%	-0.60%	-1.80%	12.60%	8.10%	5.40%	47.20%	76.20%	86.70%	92.10%	4.10%	3.80%	7.90%	0.20%
Model HH	216,084	144,166	66.70%	0.80%	1.10%	12.60%	6.30%	3.00%	66.90%	84.40%	90.30%	93.90%	2.80%	3.30%	6.10%	1.00%
Model II	439,967	406,019	92.30%	1.70%	0.70%	11.60%	5.30%	2.00%	75.00%	87.00%	91.70%	94.40%	3.80%	1.80%	5.60%	0.30%
Model JJ	458,680	368,075	80.20%	-1.80%	-2.50%	9.60%	5.30%	3.20%	72.30%	88.80%	93.30%	95.70%	2.00%	2.20%	4.30%	0.30%
Model KK	401,604	377,779	94.10%	0.10%	0.30%	7.70%	3.40%	1.40%	85.60%	93.40%	95.70%	97.30%	1.50%	1.30%	2.70%	0.30%
Model LL	364,530	320,702	88.00%	-0.30%	-0.80%	11.40%	5.90%	2.80%	69.70%	85.30%	90.50%	93.60%	3.30%	3.00%	6.40%	0.40%
Model MM	437,257	414,194	94.70%	0.60%	-1.00%	13.20%	7.10%	3.70%	60.90%	81.90%	88.80%	92.60%	4.60%	2.80%	7.40%	0.40%
Model NN	440,879	394,952	89.60%	0.70%	-0.70%	11.90%	6.50%	3.40%	64.00%	83.70%	90.20%	93.70%	4.10%	2.20%	6.30%	0.20%
Model OO	372,091	282,860	76.00%	-0.40%	-0.80%	10.90%	5.70%	2.70%	70.40%	85.50%	90.80%	93.80%	3.20%	3.00%	6.20%	0.30%
Model PP	368,303	306,157	83.10%	0.40%	-0.50%	10.70%	5.80%	3.20%	67.10%	86.30%	91.90%	94.70%	3.20%	2.00%	5.30%	0.20%
Model QQ	402,286	386,081	96.00%	-0.70%	-0.10%	9.20%	4.10%	1.70%	81.20%	91.80%	94.40%	96.10%	1.80%	2.10%	3.90%	0.40%
Model RR	439,048	423,249	96.40%	2.10%	0.70%	14.40%	6.30%	2.10%	72.50%	84.60%	89.60%	92.60%	4.90%	2.50%	7.40%	0.50%
Model SS	443,237	416,178	93.90%	1.40%	-0.40%	12.30%	6.40%	3.10%	67.00%	83.60%	89.90%	93.40%	4.70%	1.90%	6.60%	0.30%
Model TT	396,259	386,794	97.60%	0.50%	0.00%	7.40%	3.40%	1.70%	83.40%	94.30%	96.50%	98.00%	1.20%	0.70%	2.00%	0.10%
Model UU	397,666	384,230	96.60%	0.40%	0.00%	6.60%	3.20%	1.70%	83.80%	94.60%	96.80%	98.30%	1.10%	0.60%	1.70%	0.10%
Model VV	398,558	382,853	96.10%	0.40%	0.00%	6.30%	3.20%	1.70%	84.00%	94.80%	97.00%	98.40%	1.00%	0.60%	1.60%	0.00%
Model WW	455,347	427,447	93.90%	-1.30%	-0.80%	17.40%	8.40%	3.00%	64.70%	78.30%	84.40%	88.40%	4.40%	7.10%	11.60%	2.70%
Model XX	439,947	427,546	97.20%	1.50%	-0.40%	13.30%	6.70%	3.20%	66.10%	82.90%	89.30%	92.90%	4.90%	2.20%	7.10%	0.40%
Model YY	431,142	415,712	96.40%	-2.30%	-4.00%	17.00%	9.90%	6.10%	41.30%	70.20%	81.90%	88.20%	5.60%	6.20%	11.80%	0.80%
Model ZZ	428,657	359,986	84.00%	-1.50%	-2.90%	12.00%	7.10%	4.80%	52.40%	83.30%	90.70%	94.20%	3.30%	2.50%	5.80%	0.20%

"proprietary and confidential"

Vendor Summary

-40% to -31	-35% to -3	-30% to -21	-25% to -2	-20% to -11	-15% to -1	-10% to -6	-5% to -1	1% to 5%	6% to 10%	11% tp 15'	16% to 20'	21% to 25'	26% to 30'	31% to 35'	36% to 40'	OP40%
0.50%	0.70%	1.30%	2.20%	4.00%	7.10%	13.50%	28.40%	24.50%	6%	2.90%	1.70%	1.20%	0.80%	0.70%	0.50%	3.00%
0.20%	0.40%	0.80%	1.50%	2.00%	3.40%	12.20%	37.20%	25.80%	8%	2.80%	1.60%	0.90%	0.70%	0.50%	0.40%	1.60%
0.20%	0.30%	0.40%	0.90%	1.40%	2.00%	4.40%	31.80%	41.60%	8%	2.90%	1.60%	1.00%	0.70%	0.50%	0.40%	1.90%
0.20%	0.20%	0.40%	0.80%	1.90%	3.90%	10.90%	34.30%	28.40%	10%	3.90%	1.80%	0.90%	0.60%	0.40%	0.30%	1.20%
0.20%	0.50%	2.20%	4.10%	7.20%	11.20%	16.40%	17.90%	14.60%	10%	5.80%	3.60%	2.20%	1.40%	0.60%	0.50%	1.70%
0.20%	0.30%	0.40%	1.00%	2.10%	4.10%	10.90%	33.00%	27.50%	10%	4.20%	2.10%	1.10%	0.70%	0.50%	0.40%	1.40%
0.20%	0.40%	0.70%	2.30%	3.50%	5.90%	18.60%	27.20%	19.90%	10%	4.50%	1.90%	1.00%	0.80%	0.50%	0.40%	1.40%
0.30%	0.40%	0.50%	1.10%	2.20%	2.40%	4.90%	27.80%	39.10%	13%	3.50%	1.40%	0.80%	0.50%	0.40%	0.20%	0.90%
0.20%	0.20%	0.30%	0.80%	1.20%	1.80%	4.30%	32.50%	42.60%	8%	2.80%	1.50%	0.90%	0.60%	0.50%	0.30%	1.50%
0.20%	0.20%	0.40%	1.10%	1.70%	2.90%	12.50%	54.70%	17.60%	4%	1.50%	0.80%	0.50%	0.30%	0.30%	0.20%	0.80%
0.10%	0.10%	0.20%	0.60%	1.00%	1.20%	3.70%	36.80%	48.70%	4%	1.10%	0.60%	0.40%	0.20%	0.20%	0.10%	0.50%
0.20%	0.40%	0.70%	1.40%	1.80%	2.90%	9.50%	41.80%	27.90%	6%	2.40%	1.30%	0.80%	0.60%	0.40%	0.30%	1.20%
0.20%	0.40%	0.60%	1.10%	1.90%	3.10%	12.40%	37.00%	23.90%	9%	3.70%	1.90%	1.20%	0.80%	0.50%	0.40%	1.70%
0.20%	0.30%	0.50%	1.00%	1.70%	2.80%	10.80%	38.60%	25.40%	9%	3.70%	1.90%	1.10%	0.70%	0.50%	0.40%	1.50%
0.20%	0.40%	0.70%	1.40%	1.80%	3.00%	9.40%	41.80%	28.50%	6%	2.30%	1.20%	0.80%	0.60%	0.40%	0.30%	1.20%
0.10%	0.20%	0.50%	1.10%	1.40%	2.60%	10.60%	37.80%	29.30%	9%	3.00%	1.40%	0.90%	0.60%	0.40%	0.30%	1.10%
0.20%	0.20%	0.40%	0.90%	1.20%	1.70%	7.80%	37.80%	43.40%	3%	0.90%	0.60%	0.40%	0.30%	0.20%	0.20%	0.70%
0.20%	0.30%	0.50%	0.90%	1.40%	2.00%	4.40%	31.40%	41.10%	8%	2.90%	1.60%	1.00%	0.70%	0.60%	0.40%	2.20%
0.20%	0.30%	0.40%	0.80%	1.50%	2.40%	7.40%	39.90%	27.10%	9%	3.90%	2.00%	1.20%	0.80%	0.60%	0.40%	1.70%
0.10%	0.10%	0.10%	0.40%	1.00%	1.00%	4.00%	44.10%	39.30%	7%	1.30%	0.60%	0.30%	0.20%	0.10%	0.10%	0.50%
0.00%	0.10%	0.10%	0.30%	0.90%	0.90%	4.00%	44.40%	39.50%	7%	1.30%	0.50%	0.30%	0.20%	0.10%	0.10%	0.40%
0.00%	0.10%	0.10%	0.30%	0.90%	0.90%	4.00%	44.50%	39.60%	7%	1.30%	0.50%	0.30%	0.20%	0.10%	0.10%	0.30%
0.70%	0.90%	1.20%	1.70%	2.40%	3.30%	7.00%	38.50%	26.30%	7%	2.80%	1.60%	1.00%	0.70%	0.50%	0.40%	1.80%
0.20%	0.30%	0.40%	0.90%	1.60%	2.50%	7.70%	39.40%	26.60%	9%	3.90%	2.00%	1.20%	0.80%	0.60%	0.40%	1.90%
0.50%	0.80%	1.40%	2.70%	4.50%	8.70%	23.70%	29.20%	12.10%	5%	3.00%	1.90%	1.30%	0.90%	0.70%	0.50%	2.20%
0.20%	0.30%	0.60%	1.20%	2.10%	4.70%	24.20%	34.80%	17.50%	7%	2.70%	1.40%	0.80%	0.60%	0.40%	0.30%	1.30%

TestPeriod	TestRef	State	County	Location	AlphaFIPS	PropertyType	Alt Proper	REO	BenchMarkDate	BenchMar	Variance	ABSVarian	AVMValue	Confidenc	Alt Confid	FSD	LastSaleDt	LastSalePr	Comment
YYYYQQ	YYYYQQ04D60849	OH	PORTAGE	OH133	OH133	SFR	SFR	N	1/15/YYYY 0:00:00	175000			0	0		0	1/15/YYYY	175000	Not Valued
YYYYQQ	YYYYQQ04D60889	OH	SUMMIT	OH153	OH153	SFR	SFR	N	1/28/YYYY 0:00:00	209900			0	0		0	4/23/YYYY	122000	Not Valued
YYYYQQ	YYYYQQ04D60892	OH	SUMMIT	OH153	OH153	SFR	SFR	N	1/30/YYYY 0:00:00	150000	-0.02	0.02	146000	81		8	3/19/YYYY	135000	Valued
YYYYQQ	YYYYQQ04D61297	OR	JOSEPHINE	OR033	OR033	SFR	SFR	N	1/30/YYYY 0:00:00	214000			0	0		0	4/28/YYYY	45000	Not Valued
YYYYQQ	YYYYQQ04D61302	OR	KLAMATH	OR035	OR035	SFR	SFR	N	1/25/YYYY 0:00:00	69000	0.08	0.08	74900	82		8		0	Valued
YYYYQQ	YYYYQQ04D61106	OK	POTTAWA	OK125	OK125	SFR	SFR	N	1/25/YYYY 0:00:00	85000	0.02	0.02	87000	82		13	8/29/YYYY	78000	Valued
YYYYQQ	YYYYQQ04D61092	OK	OKLAHOMA	OK109	OK109	SFR	SFR	N	1/24/YYYY 0:00:00	195500	0.03	0.03	202700	84		7	7/17/YYYY	193000	Valued
YYYYQQ	YYYYQQ04D61112	OK	POTTAWA	OK125	OK125	SFR	SFR	N	1/22/YYYY 0:00:00	190000	-0.03	0.03	183000	90		6	1/29/YYYY	185000	Valued
YYYYQQ	YYYYQQ04D61311	OR	LANE	OR039	OR039	SFR	SFR	N	1/30/YYYY 0:00:00	160000			0	0		0	4/1/YYYY	127000	Not Valued
YYYYQQ	YYYYQQ04D61284	OR	JACKSON	OR029	OR029	SFR	SFR	N	1/30/YYYY 0:00:00	410000	0.07	0.07	439800	69		14	8/31/YYYY	375000	Valued
YYYYQQ	YYYYQQ04D61147	OK	TULSA	OK143	OK143	SFR	SFR	N	1/18/YYYY 0:00:00	159500	-0.01	0.01	157400	67		16	7/19/YYYY	147000	Valued
YYYYQQ	YYYYQQ04D61193	OR	CLACKAM	OR005	OR005	SFR	SFR	N	1/28/YYYY 0:00:00	493900	-0.02	0.02	483000	90		6	9/10/YYYY	402069	Valued
YYYYQQ	YYYYQQ04D61232	OR	DESCHUTE	OR017	OR017	SFR	SFR	N	1/17/YYYY 0:00:00	1050000	0.07	0.07	1128200	81		8	11/1/YYYY	480000	Valued
YYYYQQ	YYYYQQ04D61438	OR	MULTNOM	OR051	OR051	SFR	SFR	N	1/28/YYYY 0:00:00	539000	-0.04	0.04	516000	74		11	6/10/YYYY	470000	Valued
YYYYQQ	YYYYQQ04D61325	OR	LANE	OR039	OR039	SFR	SFR	N	1/29/YYYY 0:00:00	385000	-0.02	0.02	376000	83		7	6/27/YYYY	290000	Valued
YYYYQQ	YYYYQQ04D61102	OK	PITTSBURGH	OK121	OK121	SFR	SFR	N	1/28/YYYY 0:00:00	117500			0	0		0		0	Not Valued
YYYYQQ	YYYYQQ04D61123	OK	TULSA	OK143	OK143	SFR	SFR	N	1/16/YYYY 0:00:00	134000	-0.03	0.03	129500	66		16	10/11/YYY	120000	Valued
YYYYQQ	YYYYQQ04D61246	OR	DESCHUTE	OR017	OR017	SFR	SFR	N	1/26/YYYY 0:00:00	500000	0.04	0.04	520800	80		9	12/9/YYYY	59500	Valued
YYYYQQ	YYYYQQ04D61215	OR	CLACKAM	OR005	OR005	SFR	SFR	N	1/24/YYYY 0:00:00	319000	-0.04	0.04	305200	84		7	2/28/YYYY	289500	Valued
YYYYQQ	YYYYQQ04D61226	OR	CLACKAM	OR005	OR005	SFR	SFR	N	2/1/YYYY 0:00:00	490000			0	0		0	10/6/YYYY	416000	Not Valued
YYYYQQ	YYYYQQ04D61319	OR	LANE	OR039	OR039	SFR	SFR	N	1/24/YYYY 0:00:00	558732	0.01	0.01	566300	82		8	2/26/YYYY	504000	Valued
YYYYQQ	YYYYQQ04D61437	OR	MULTNOM	OR051	OR051	SFR	SFR	N	2/1/YYYY 0:00:00	425000	0.14	0.14	485000	72		13	9/6/YYYY	270000	Valued
YYYYQQ	YYYYQQ04D61439	OR	MULTNOM	OR051	OR051	CND	Non-SFR	N	1/29/YYYY 0:00:00	225000	-0.08	0.08	207000	85		5	7/12/YYYY	78000	Valued
YYYYQQ	YYYYQQ04D61408	OR	MULTNOM	OR051	OR051	SFR	SFR	N	1/28/YYYY 0:00:00	472000	-0.06	0.06	439000	61		14	2/11/YYYY	279000	Valued
YYYYQQ	YYYYQQ04D61578	PA	BERKS	PA011	PA011	SFR	SFR	N	1/15/YYYY 0:00:00	257900	-0.02	0.02	252600	82		8	1/14/YYYY	253000	Valued
YYYYQQ	YYYYQQ04D61619	PA	BUCKS	PA017	PA017	SFR	SFR	N	1/25/YYYY 0:00:00	335000	-0.01	0.01	331500	69		15	4/26/YYYY	53500	Valued
YYYYQQ	YYYYQQ04D61525	OR	WASHINGTON	OR067	OR067	SFR	SFR	N	1/30/YYYY 0:00:00	532000	-0.03	0.03	515000	90		6	6/30/YYYY	450000	Valued
YYYYQQ	YYYYQQ04D61574	PA	BERKS	PA011	PA011	SFR	SFR	N	1/25/YYYY 0:00:00	359000			0	0		0	3/19/YYYY	30000	Not Valued
YYYYQQ	YYYYQQ04D61386	OR	MARION	OR047	OR047	SFR	SFR	N	1/24/YYYY 0:00:00	248000	0.05	0.05	261400	69		14	11/7/YYYY	82500	Valued
YYYYQQ	YYYYQQ04D61477	OR	MULTNOM	OR051	OR051	SFR	SFR	N	1/30/YYYY 0:00:00	220000	0.28	0.28	282000	72		13	10/21/YYY	500000	Valued
YYYYQQ	YYYYQQ04D61558	PA	BEAVER	PA007	PA007	SFR	SFR	N	1/21/YYYY 0:00:00	111500			0	0		0	8/20/YYYY	375000	Not Valued
YYYYQQ	YYYYQQ04D61714	PA	DAUPHIN	PA043	PA043	SFR	SFR	N	1/18/YYYY 0:00:00	209900	-0.1	0.1	188900	74		11	12/15/YYYY	115800	Valued
YYYYQQ	YYYYQQ04D61605	PA	BUCKS	PA017	PA017	SFR	SFR	N	1/25/YYYY 0:00:00	165000	8.48E-03	8.48E-03	166400	84		7	9/22/YYYY	190000	Valued